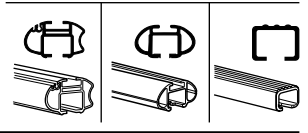
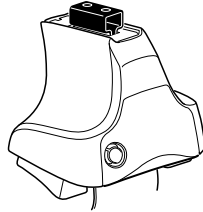


Kit 1388

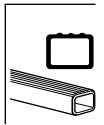
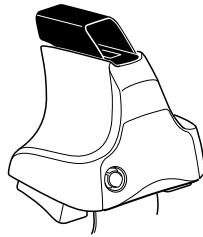
HYUNDAI Sonata, 4-dr Sedan, 05- / *06-10

*North America

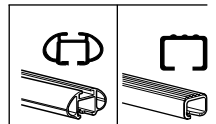
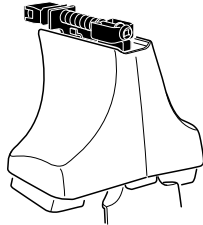
480R
754



480



750



x1 **x4** **x4** **x4**

480R/754

x1 **x4** **x4** **x4**

480

x1 **x4** **x4** **x4**

750

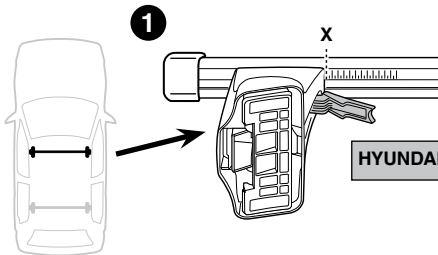
x2	x2	x2	x2	x2
x2	x2	x2	x2	x2
x2	x2	x4	x4	x4
x4	x4	x4	x4	x4

161	219	735
x2	x1	x2
218	734	748
x1	x1	x1

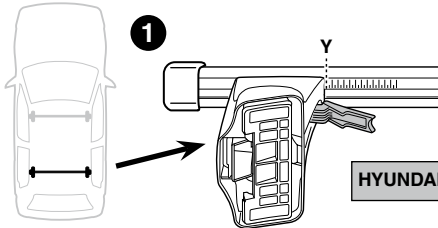
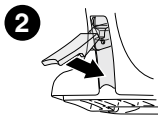
x1

Kit

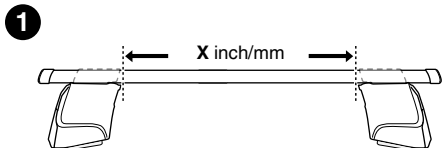
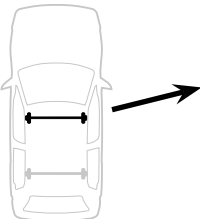
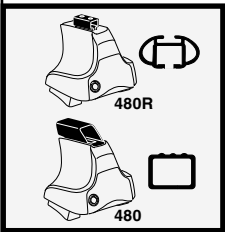
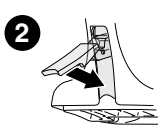




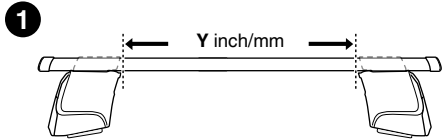
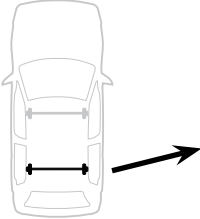
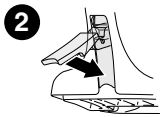
	X
HYUNDAI Sonata, 4-dr Sedan, 05- / *06-10	42,5



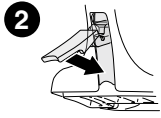
	Y
HYUNDAI Sonata, 4-dr Sedan, 05- / *06-10	39



	X inch	X mm
HYUNDAI Sonata, 4-dr Sedan, 05- / *06-10	42 3/8"	1076 mm

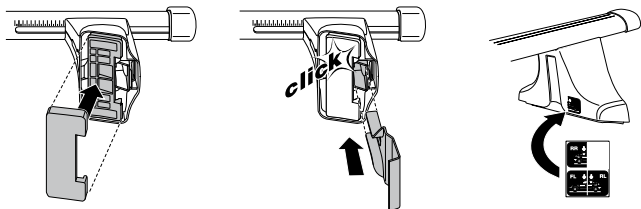
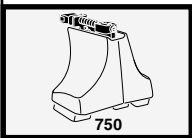
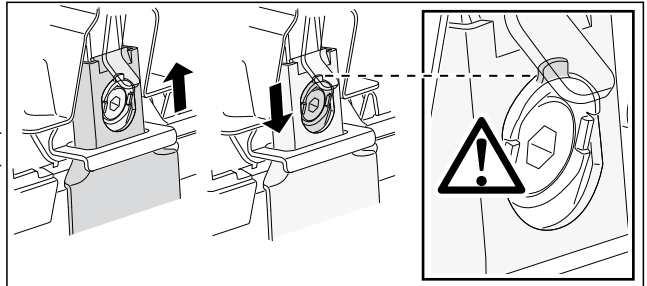
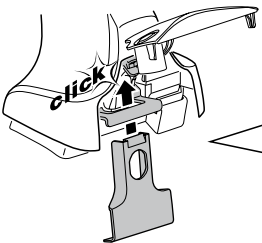
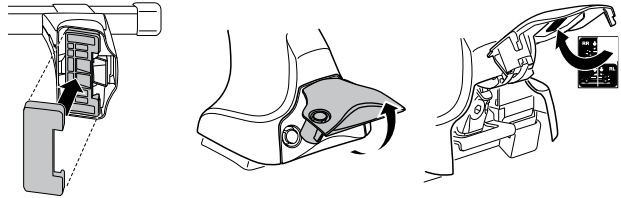
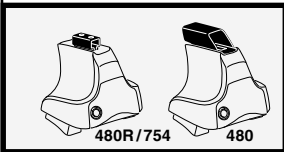
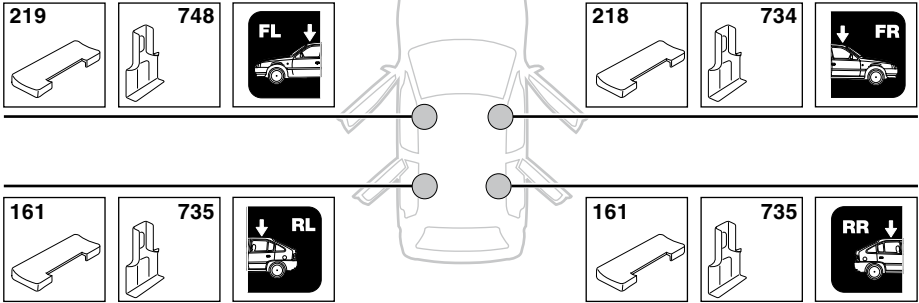


	Y inch	Y mm
HYUNDAI Sonata, 4-dr Sedan, 05- / *06-10	41"	1041 mm

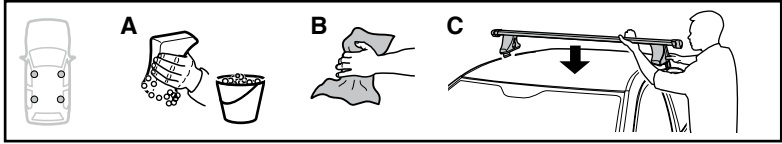


4

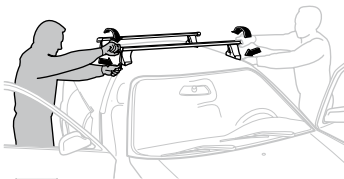
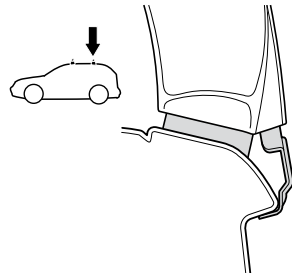
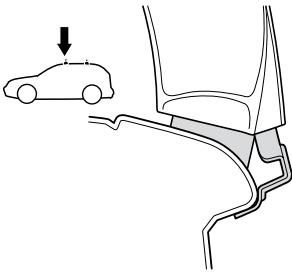
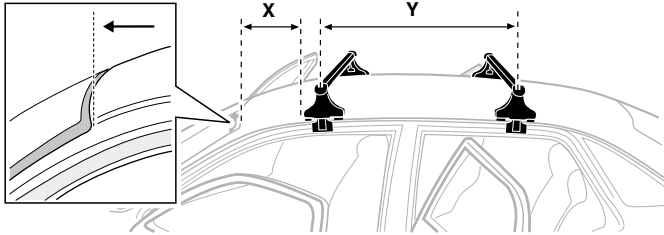
HYUNDAI Sonata, 4-dr Sedan, 05- / *06-10



5



	X mm	Y mm	X inch	Y inch
HYUNDAI Sonata, 4-dr Sedan, 05- / *06-10	230 mm	670 mm	9"	26 7/8"



GB/US Tighten alternately

D Die Schrauben abwechselnd anziehen

F Serrer alternativement chaque côté

NL Afwisselend aan de linker- en de rechterkant aandraaien

I Alternare il serraggio delle viti

E Serrare alternativamente

PT Aperte alternadamente

S Dra åt växelvis

FIN Kierrä vuorotellen

EST Pinguldage vaheldumisi

LAT Pievelciet pamišus

LIT Užsukinėkite pakaitomis

PL Śruby dokręcaj naprzemiennie

RU Затягивайте попеременно

CZ Pokręťte багаžníka dokręcaj dokręcaj naprzemiennie.

SK Dotahujte striedavo

SLO Privijajte izmenično.

HR Naizmjenično zategnite

HU Egymástól függetlenül szorítandó

GR Σφιγγετε εναλλάξ

TR Dönüşümlü sıkın

中文 交替拧紧

한국어 번갈아 가며 조이십시오.

日本語 交互に締め付けてください。

ไทย ชั้้นในแบบสลับ

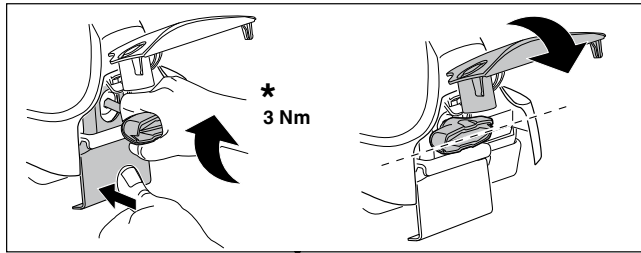
6



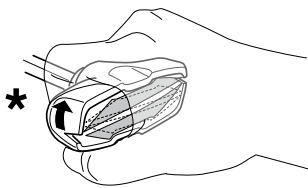
480R/754



480



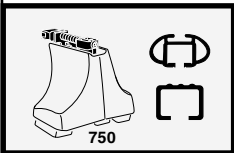
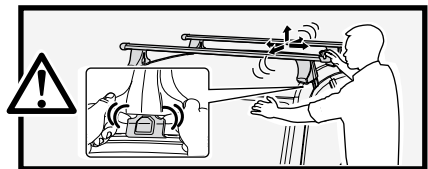
*
3 Nm



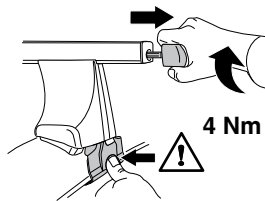
*



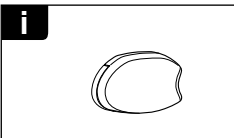
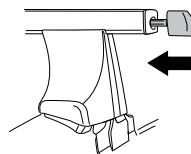
*
≈ 3 Nm



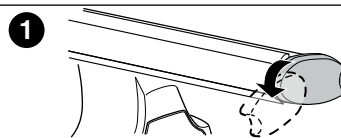
750



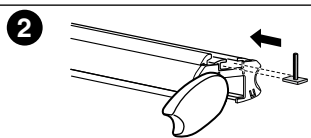
4 Nm



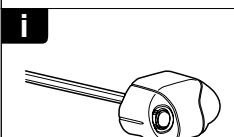
i



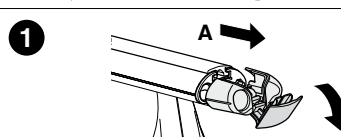
1



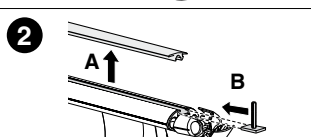
2



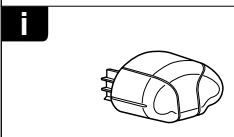
i



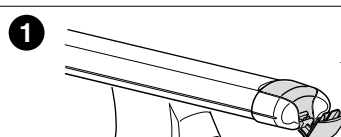
1



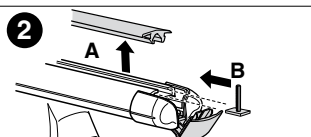
2



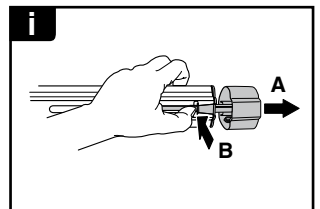
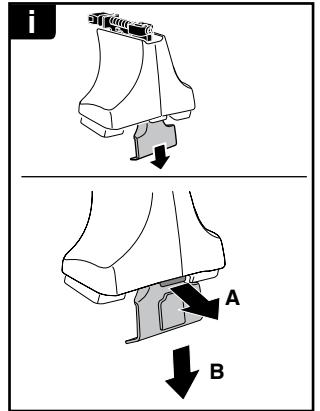
i



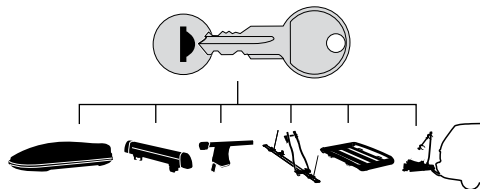
1



2



THULE
SWEDEN
**ONE
KEY
SYSTEM**



- 544 (x4)
- 596 (x6)
- 588 (x8)
- NA 510 (x10)
- EUR 452 (x12)
- ASIA 452 (x12)

