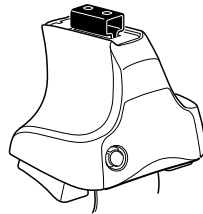


Kit 1434

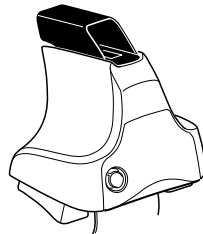
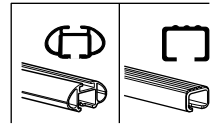
HYUNDAI Avante, 4-dr Sedan, 06-10

HYUNDAI Elantra, 4-dr Sedan, 06-10 / *07-10

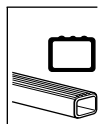
*North America



754 Rapid System
480R Rapid Traverse (North America)



480 Traverse (North America)



xx kg
xx lbs

+ 7 kg
15,4 lbs =

**Max.
60 kg**
**Max.
132 lbs**

80 km/h
50 Mph 130 km/h
80 Mph

40 km/h
25 Mph

km/h
Mph

THULE

Kit XXXX
instructions

THULE

x1

x4

754 Rapid System

x4

480R Rapid Traverse (North America)

x4

x4

754 Rapid System

480R Rapid Traverse (North America)

x1

x4

x4

x4

x4

480 Traverse (North America)

(North America)

x2

x2

23 mm

x2

x2

x4

x4

x1

17 mm

x2

23 mm

x2

x2

x2

x2

x2

x2

x2

x2

x1

30

x4

320

x1

29

x2

109

x1

RR ↓ FR

FL ↓ RL

x1

1



2



754 Rapid System
480R Rapid Traverse
(North America)



x4



x4



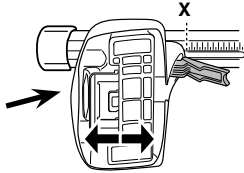
x4



480 Traverse
(North America)



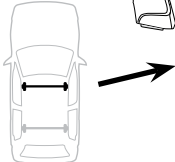
x4

3**754** Rapid System

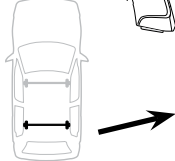
	X
HYUNDAI Avante , 4-dr Sedan, 06-10	37,5
HYUNDAI Elantra , 4-dr Sedan, 06-10 / *07-10	37,5



	Y
HYUNDAI Avante , 4-dr Sedan, 06-10	38,5
HYUNDAI Elantra , 4-dr Sedan, 06-10 / *07-10	38,5

3**480R** Rapid Traverse**480** Traverse**(North America)**

	X inch	X mm
HYUNDAI Avante , 4-dr Sedan, 06-10	40 ³/₈"	1026 mm
HYUNDAI Elantra , 4-dr Sedan, 06-10 / *07-10	40 ³/₈"	1026 mm



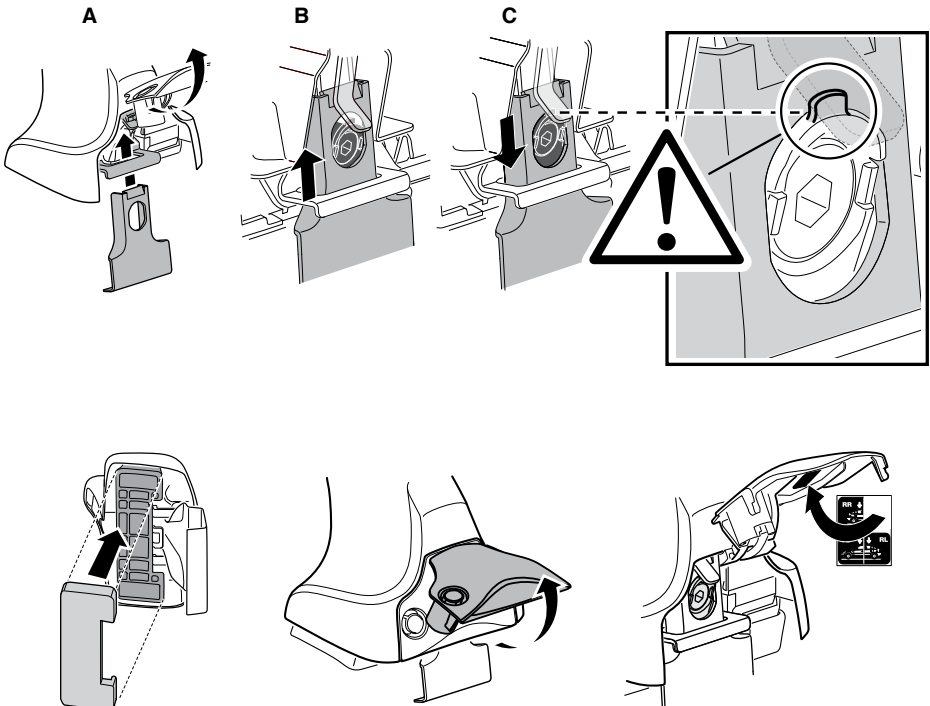
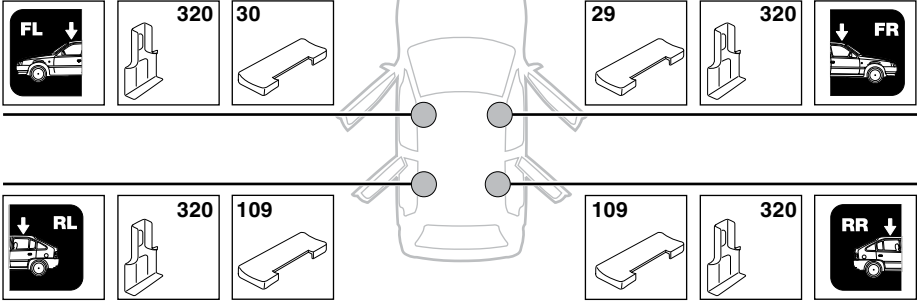
	Y inch	Y mm
HYUNDAI Avante , 4-dr Sedan, 06-10	40 ³/₄"	1036 mm
HYUNDAI Elantra , 4-dr Sedan, 06-10 / *07-10	40 ³/₄"	1036 mm

4

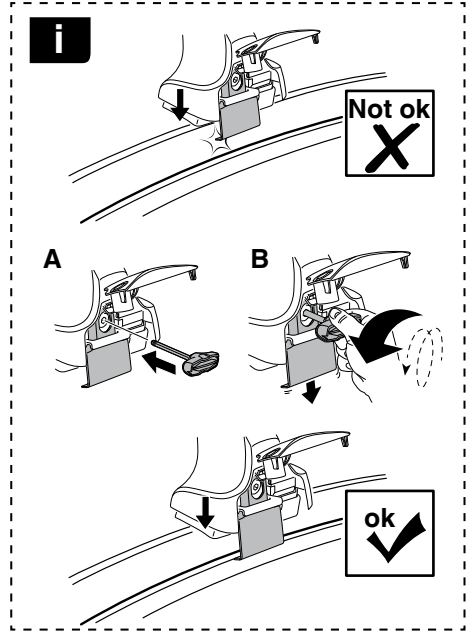
5

HYUNDAI Avante, 4-dr Sedan, 06-10

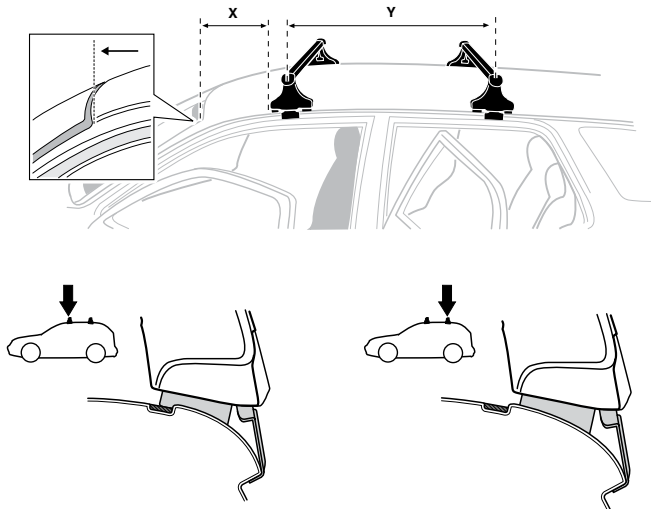
HYUNDAI Elantra, 4-dr Sedan, 06-10 / *07-10



6



	X mm	Y mm	X inch	Y inch
HYUNDAI Avante, 4-dr Sedan, 06-10	230 mm	680 mm	9"	26 ³ / ₄ "
HYUNDAI Elantra, 4-dr Sedan, 06-10 / *07-10	230 mm	680 mm	9"	26 ³ / ₄ "



7



GB/US	Tighten alternately
D	Die Schrauben abwechselnd anziehen
F	Serrer alternativement chaque côté
NL	Afwisselend aan de linker- en de rechterkant aandraaien
I	Alternare il serraggio delle viti
E	Apertar alternativamente
PT	Aperte alternadamente
S	Dra åt växelvis
FIN	Kierrä vuorotellen
EST	Pinguldage vaheldumisi
LAT	Pielveiciet pamišus
LIT	Užsukinėkite pakaitomis
PL	Śruby dokręcaj naprzemiennie
RU	Загряивайте попеременно

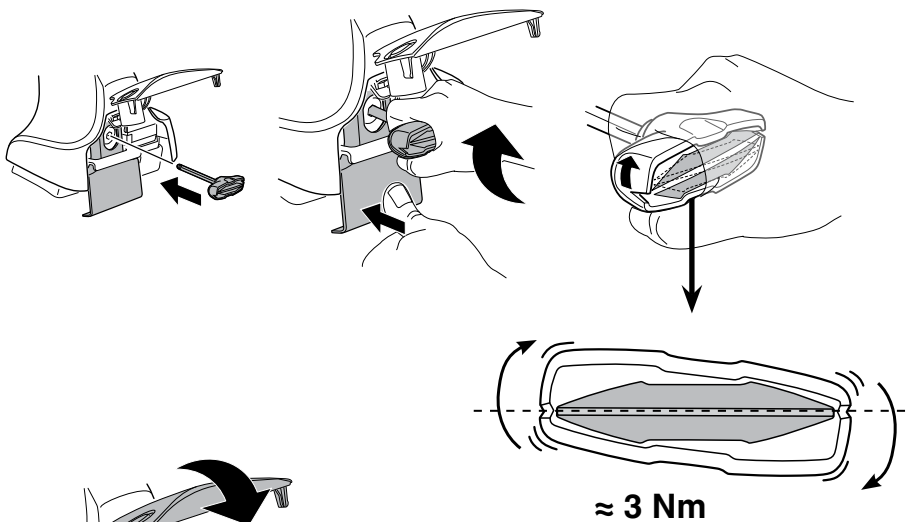
CZ	Pokręřta bagažníka dokręřcaj dokręřcaj naprzemiennie.
SK	Dofahajte striedavo
SLO	Privijajte izmenično.
HR	Naizmjenočno zategnite
HU	Egymástól függetlenül szorítandó
GR	Σφιγίγες ενολάξ
TR	Dönüşümlü sıkın

中文 交替拧紧

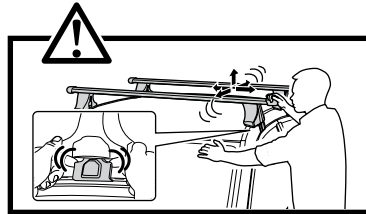
한국어 번갈아 가며 조이십시오.

日本語 交互に締め付けてください。

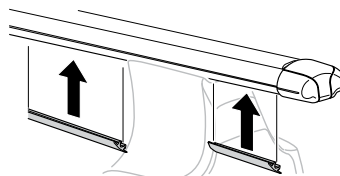
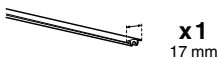
ไทย ชันในแบบสลับ



≈ 3 Nm



8





THULE
SWEDEN
**ONE
KEY
SYSTEM**



- 544 (x4)
- 596 (x6)
- 588 (x8)
- NA 510 (x10)
- EUR 452 (x12)
- ASIA



WW ▶ Thule Sweden AB, Box 69, 330 33 Hillerstorp, SWEDEN
NA ▶ Thule Inc., 42 Silvermine Road, Seymour, Connecticut 06483, USA

info@thule.com
customer.service@thule.com

www.thule.com