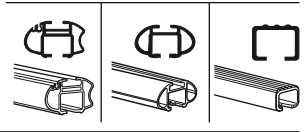
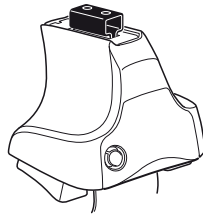


Kit 1449

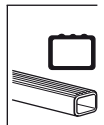
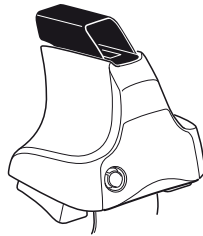
FORD Mondeo, 5-dr Estate, 07-*

* without railing

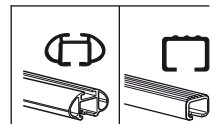
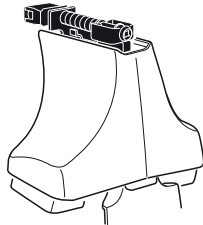
480R
754



480



750



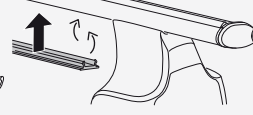
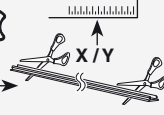
Kit



3



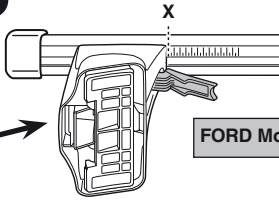
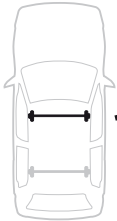
754



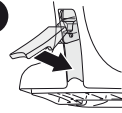
750



1



2

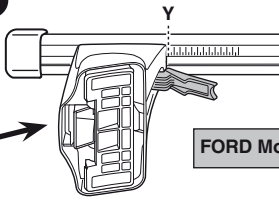


FORD Mondeo, 5-dr Estate, 07-

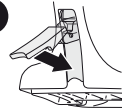
X

41

1



2



FORD Mondeo, 5-dr Estate, 07-

Y

35

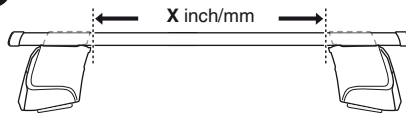


480R

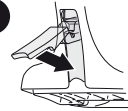


480

1



2



X inch

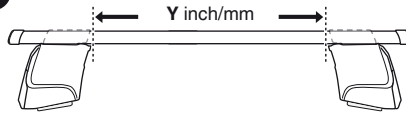
X mm

FORD Mondeo, 5-dr Estate, 07-

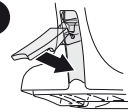
41 3/4"

1061 mm

1



2



Y inch

Y mm

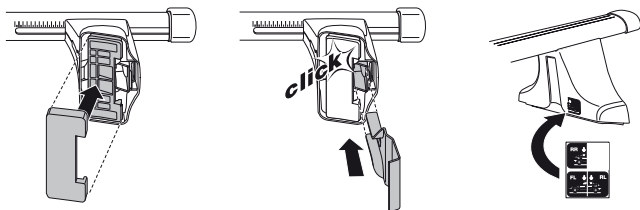
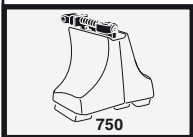
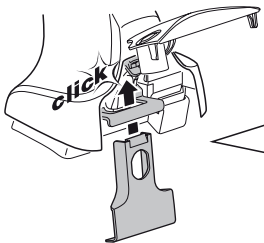
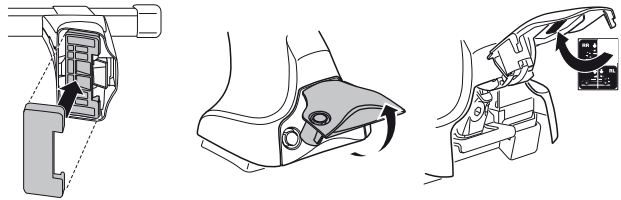
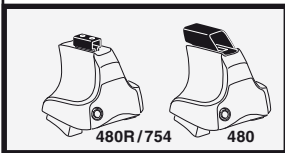
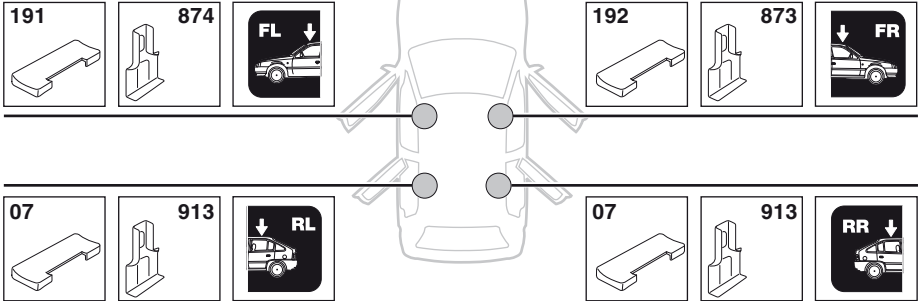
FORD Mondeo, 5-dr Estate, 07-

39 3/8"

1001 mm

4

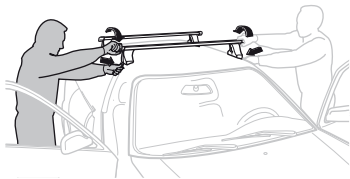
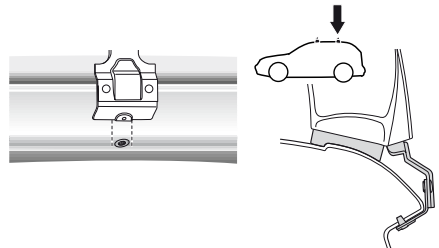
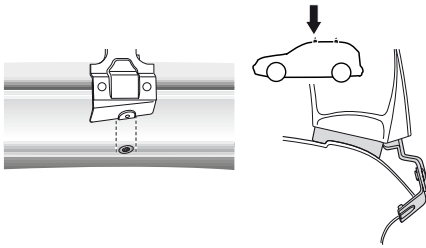
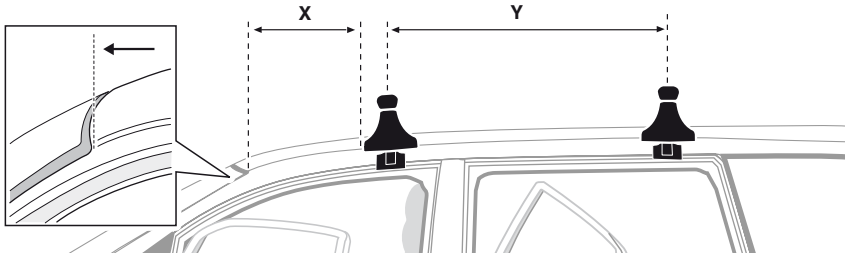
FORD Mondeo, 5-dr Estate, 07-



5



	X mm	Y mm	X inch	Y inch
FORD Mondeo, 5-dr Estate, 07-	270 mm	810 mm	10 ⁵ / ₈ "	31 ⁷ / ₈ "



GB/US Tighten alternately

D Die Schrauben abwechselnd anziehen

F Serrer alternativement chaque côté

NL Afwisselend aan de linker- en de rechterkant aandraaien

I Alternare il serraggio delle viti

E Apretar alternativamente

PT Aperte alternadamente

S Dra åt växelvis

FIN Kierrä vuorotellen

EST Pinguldage vaheldumisi

LAT Pielieciet pamišus

LIT Užsukinėkite pakaitomis

PL Śruby dokręcaj naprzemiennie

RU Затягивайте попеременно

CZ Pokręťta багаžníka dokręcaj dokręcaj naprzemiennie.

SK Doťahujte striedavo

SLO Privijajte izmenično.

HR Naizmjenično zategnite

HU Egymástól függetlenül szorítandó

GR Σφιγγετε εναλλάξ

TR Dönüşümlü sıkın

中文 交替拧紧

한국어 번갈아 가며 조이십시오.

日本語 交互に締め付けてください。

ไทย ชันโนแบบสลับ

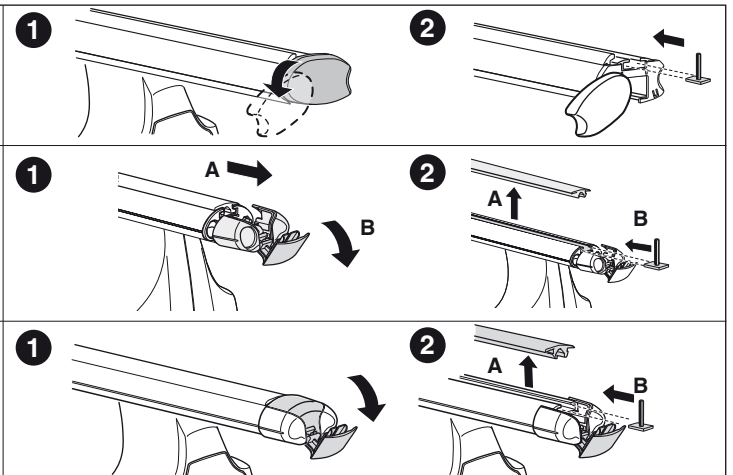
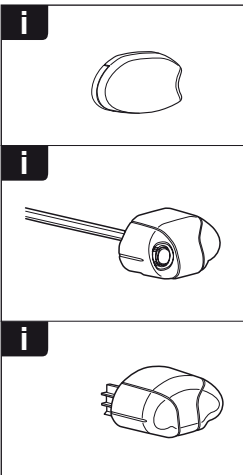
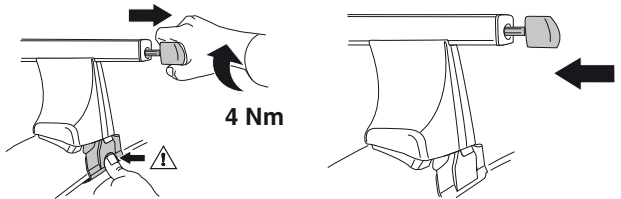
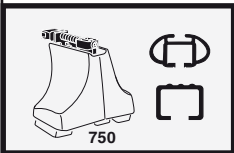
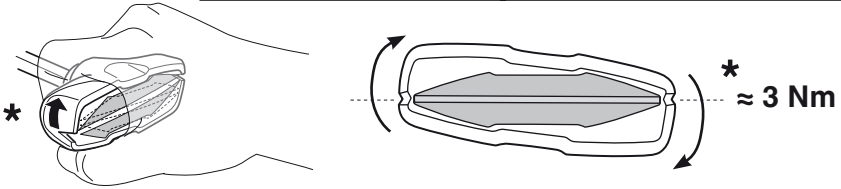
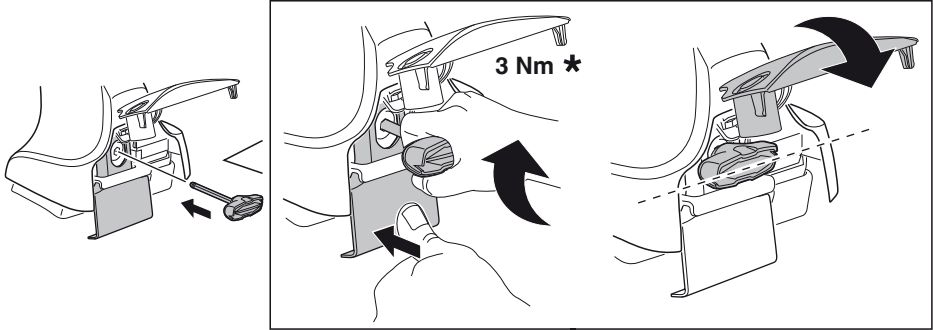
6

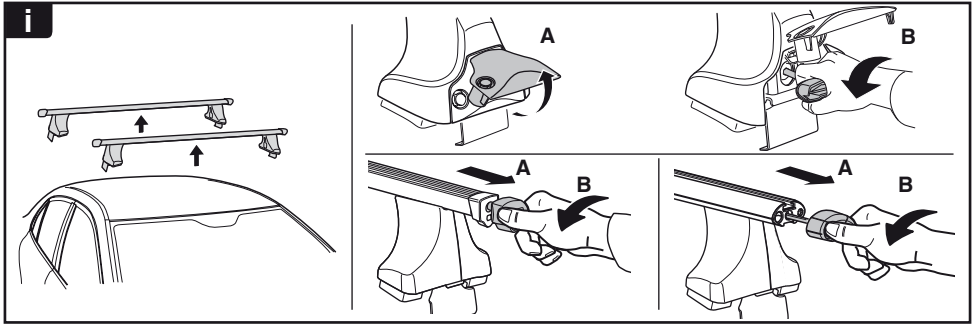


480R/754



480





THULE
SWEDEN
**ONE
KEY
SYSTEM**



- 544 (x4)
- 596 (x6)
- 588 (x8)
- NA 510 (x10)
- EUR 452 (x12)
- ASIA

