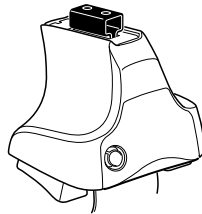


Kit 1579

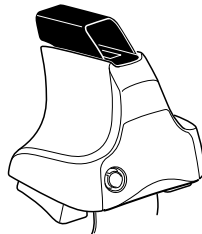
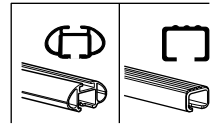
KIA Cerato, 4-dr Sedan, 08–

KIA Forte, 4-dr Sedan, 08– / *10–

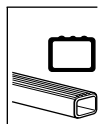
*North America



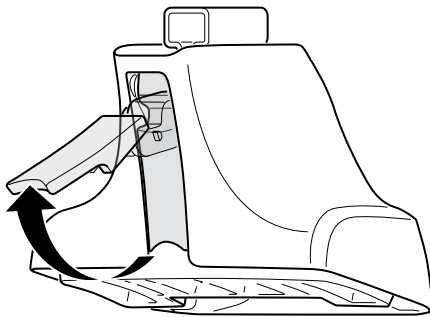
754 Rapid System
480R Rapid Traverse (North America)



480 Traverse (North America)



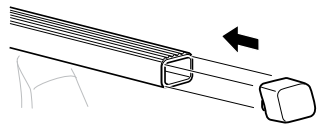
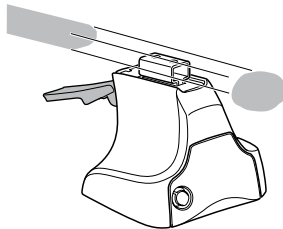
1



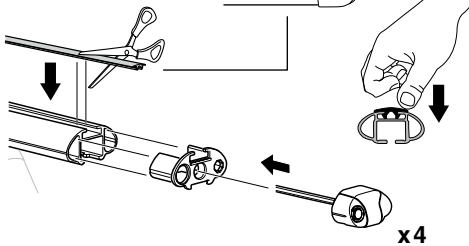
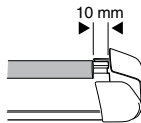
2



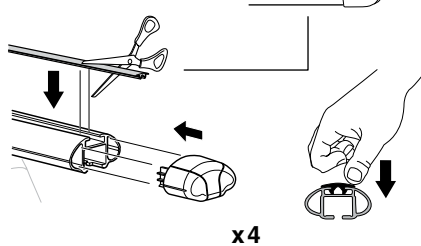
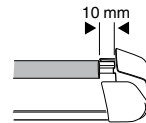
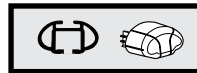
754 Rapid System
480R Rapid Traverse
(North America)



x4



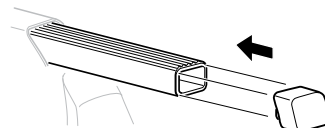
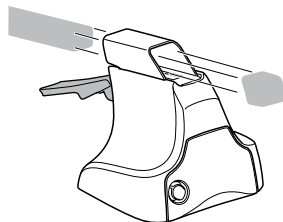
x4



x4



480 Traverse
(North America)

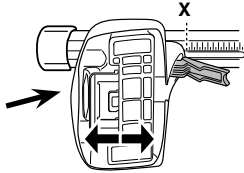


x4

3



754 Rapid System



	X
KIA Cerato, 4-dr Sedan, 08-	38,5
KIA Forte, 4-dr Sedan, 08- / *10-	38,5



	Y
KIA Cerato, 4-dr Sedan, 08-	36,5
KIA Forte, 4-dr Sedan, 08- / *10-	36,5

3

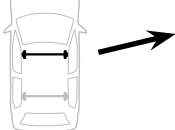


480R Rapid Traverse

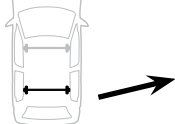


480 Traverse

(North America)



	X inch	X mm
KIA Cerato, 4-dr Sedan, 08-	40 3/4"	1036 mm
KIA Forte, 4-dr Sedan, 08- / *10-	40 3/4"	1036 mm



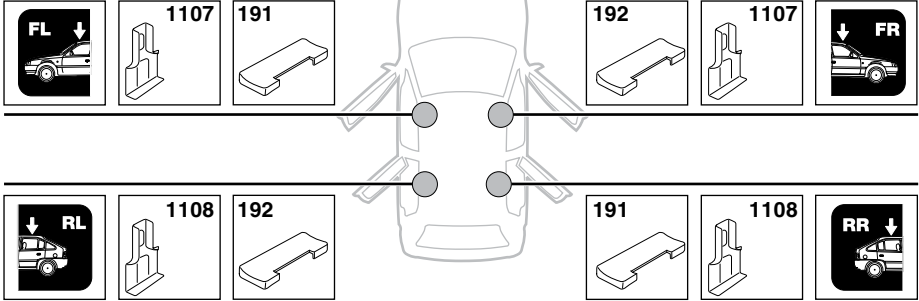
	Y inch	Y mm
KIA Cerato, 4-dr Sedan, 08-	40"	1015 mm
KIA Forte, 4-dr Sedan, 08- / *10-	40"	1015 mm

4

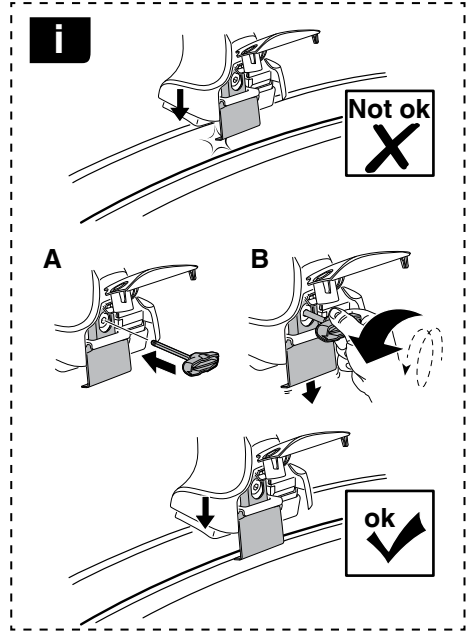


5

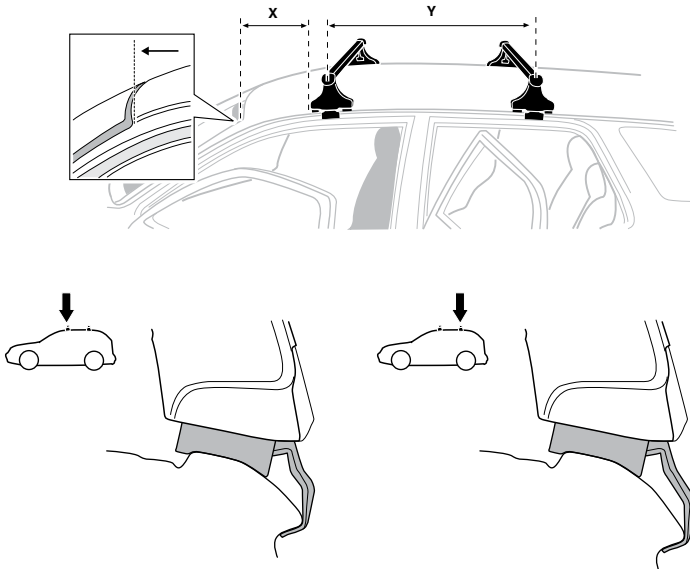
KIA Cerato, 4-dr Sedan, 08–
KIA Forte, 4-dr Sedan, 08– / *10–



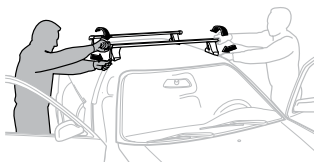
6



	X mm	Y mm	X inch	Y inch
KIA Cerato, 4-dr Sedan, 08-	260 mm	660 mm	10 1/4"	26"
KIA Forte, 4-dr Sedan, 08- / *10-	260 mm	660 mm	10 1/4"	26"



7



GB/US Tighten alternately
D Die Schrauben abwechselnd anziehen
F Serrer alternativement chaque côté
NL Afwisselend aan de linker- en de rechterkant aandraaien
I Alternare il serraggio delle viti
E Apertar alternativamente
PT Aperte alternadamente
S Dra åt växelvis
FIN Kierrä vuorotellen
EST Pinguldage vaheldumisi
LAT Pieļieciet pamišus
LIT Užsukinėkite pakaitomis
PL Śruby dokręcaj naprzemiennie
RU Затягивайте попеременно

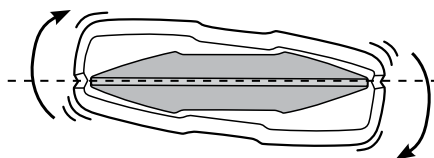
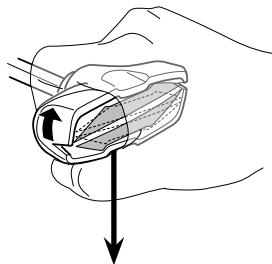
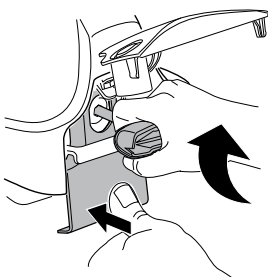
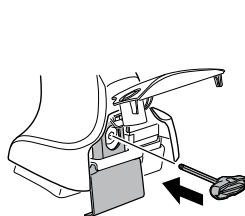
CZ Pokręťta bagażnika dokręcaj naprzemiennie.
SK Dofahujte striedavo
SLO Privijajte izmenično.
HR Naizmjenočno zategnite
HU Egymástól függetlenül szorítandó
GR Σφιγίγτες εναλλάξ
TR Dönüşümlü sıkın

中文 交替拧紧

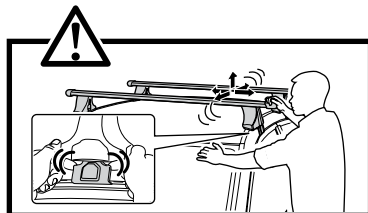
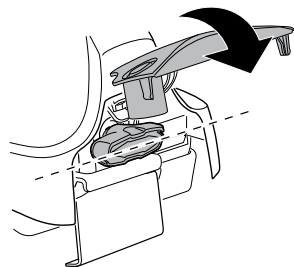
한국어 번갈아 가며 조이십시오.

日本語 交互に締め付けてください。

ไทย ชันในแบบสลับ



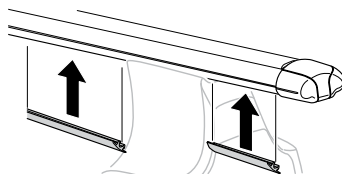
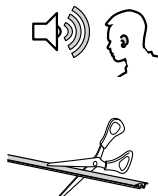
≈ 3 Nm

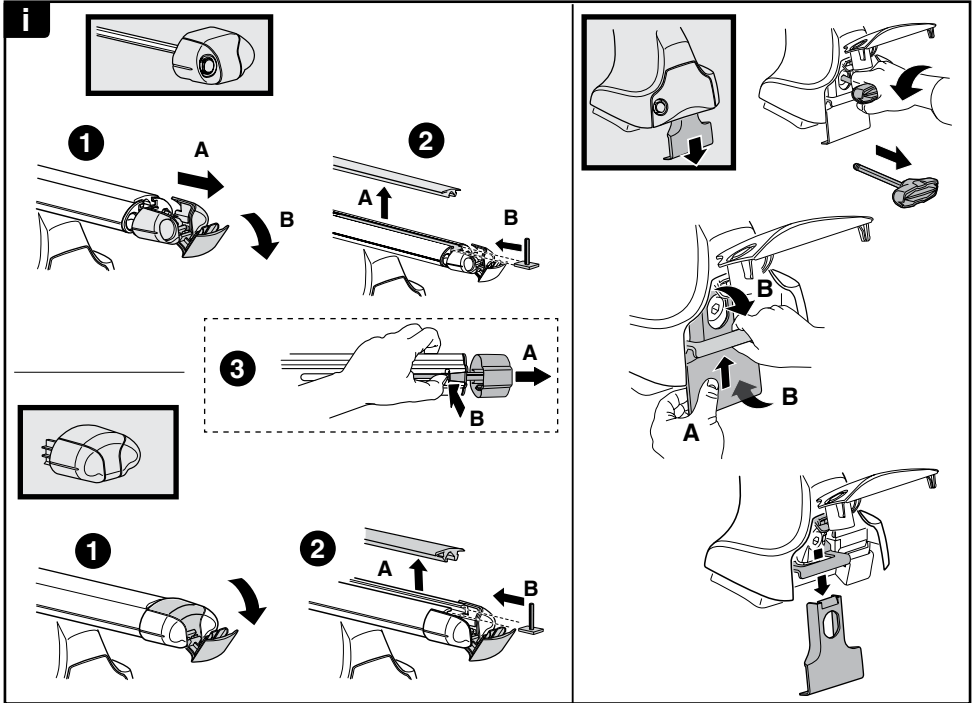


8

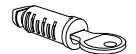
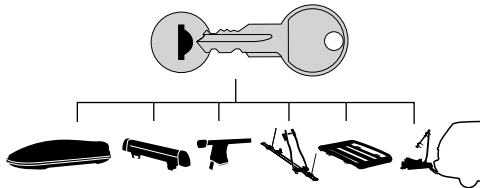


x1
17 mm





THULE
SWEDEN
**ONE
KEY
SYSTEM**



544 (x4)

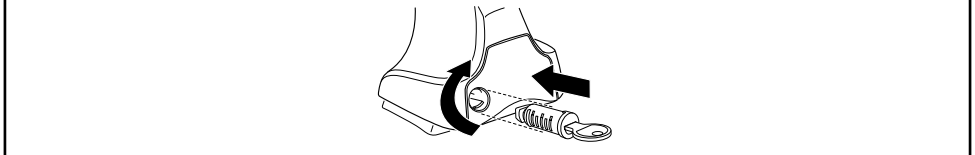
596 (x6)

588 (x8)

NA **510** (x10)

EUR **452** (x12)

ASIA



WW ▶ Thule Sweden AB, Box 69, 330 33 Hillerstorp, SWEDEN
NA ▶ Thule Inc., 42 Silvermine Road, Seymour, Connecticut 06483, USA

info@thule.com
customer.service@thule.com

www.thule.com

503-1579-03