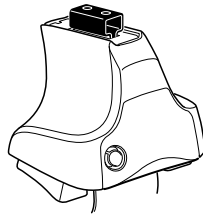
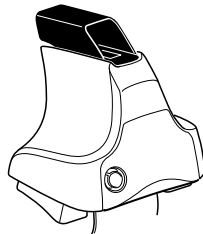
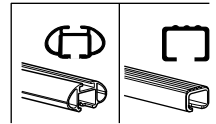


Kit 1604

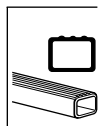
CHRYSLER 300, 4-dr Sedan, *11–
DODGE Charger, 4-dr Sedan, *11–
LANCIA Thema, 4-dr Sedan, 11–
*North America



754 Rapid System
480R Rapid Traverse (North America)



480 Traverse (North America)



xx kg
xx lbs + **7 kg**
15,4 lbs = **Max. 60 kg**
Max. 132 lbs

THULE
Instructions
Kit XXXX

754 Rapid System
480R Rapid Traverse (North America)
754 Rapid System
480R Rapid Traverse (North America)
480 Traverse (North America)

(North America)

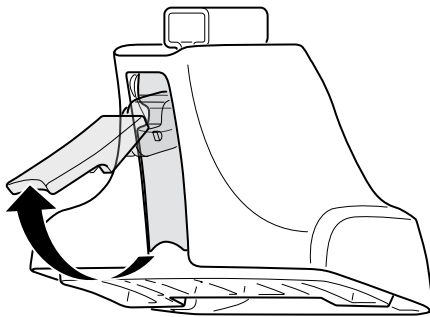
x2, x2, x2, x2, x4, x4, x1, x2, x2, x2, x2, x2, x2

349 x2, 120 x1, 266 x1, 666 x2, 121 x1, 267 x1

RR, FR, RL, FL

x1

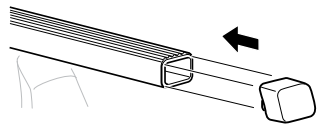
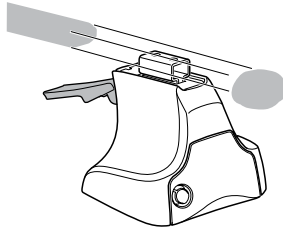
1



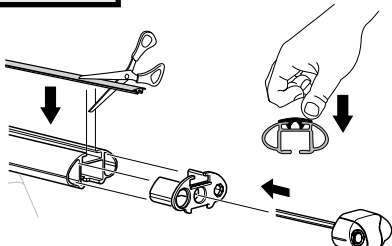
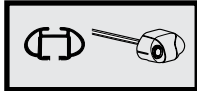
2



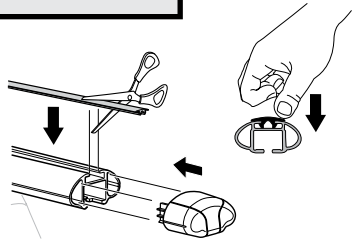
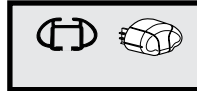
754 Rapid System
480R Rapid Traverse
(North America)



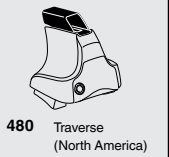
x4



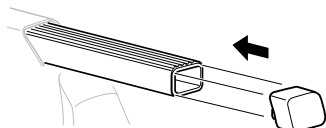
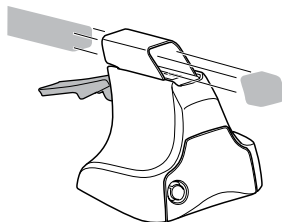
x4



x4

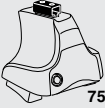


480 Traverse
(North America)

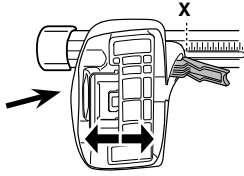


x4

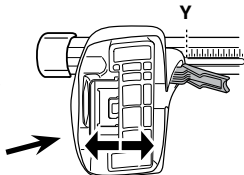
3



754 Rapid System



	X
CHRYSLER 300 , 4-dr Sedan, *11-	46
DODGE Charger , 4-dr Sedan, *11-	46
LANCIA Thema , 4-dr Sedan, 11-	46



	Y
CHRYSLER 300 , 4-dr Sedan, *11-	46
DODGE Charger , 4-dr Sedan, *11-	46
LANCIA Thema , 4-dr Sedan, 11-	46

3

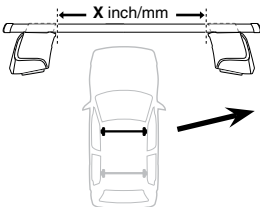


480R Rapid Traverse

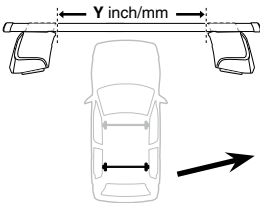


480 Traverse

(North America)

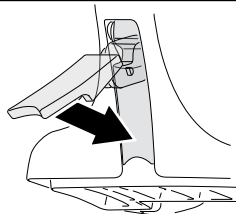


	X inch	X mm
CHRYSLER 300 , 4-dr Sedan, *11-	43 ³/₄"	1111 mm
DODGE Charger , 4-dr Sedan, *11-	43 ³/₄"	1111 mm
LANCIA Thema , 4-dr Sedan, 11-	43 ³/₄"	1111 mm



	Y inch	Y mm
CHRYSLER 300 , 4-dr Sedan, *11-	43 ⁷/₈"	1111 mm
DODGE Charger , 4-dr Sedan, *11-	43 ⁷/₈"	1111 mm
LANCIA Thema , 4-dr Sedan, 11-	43 ⁷/₈"	1111 mm

4

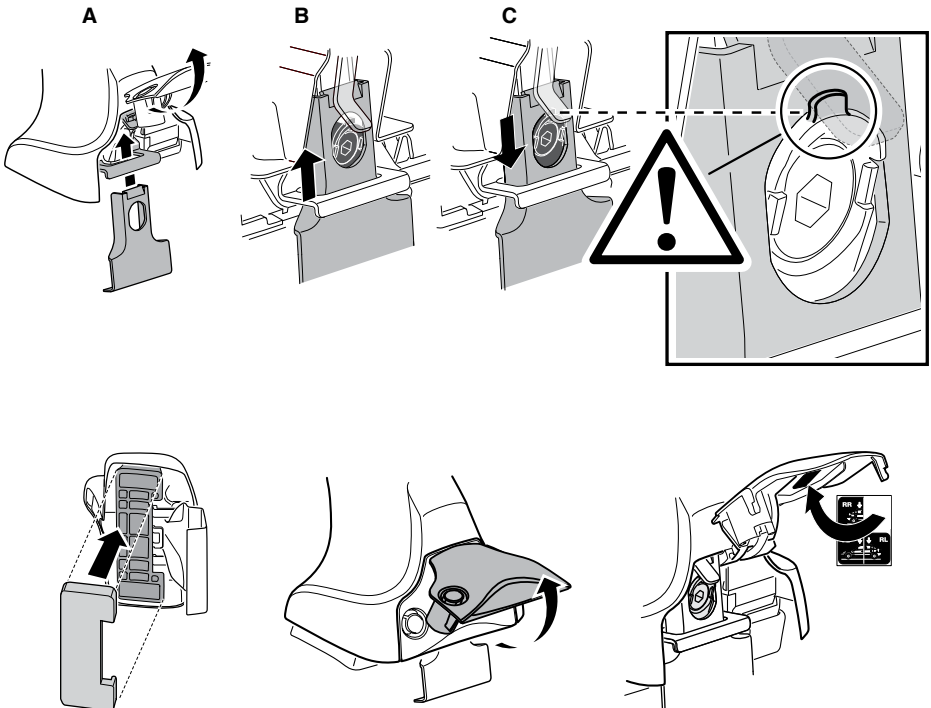
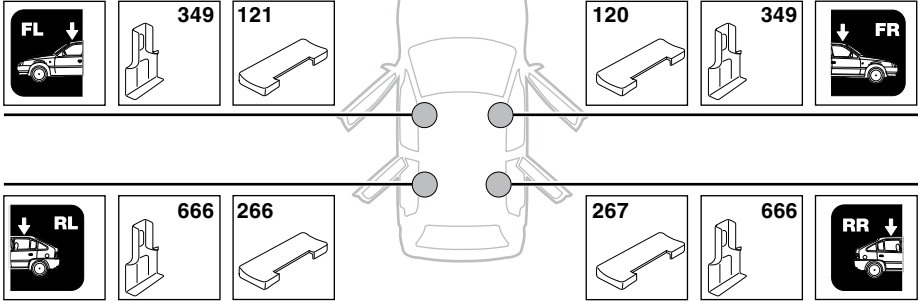


5

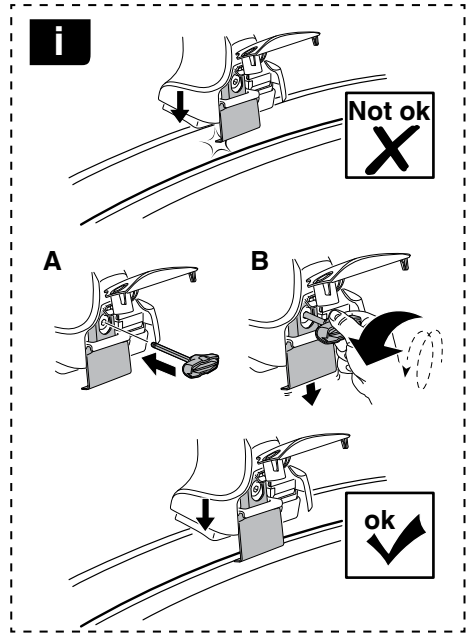
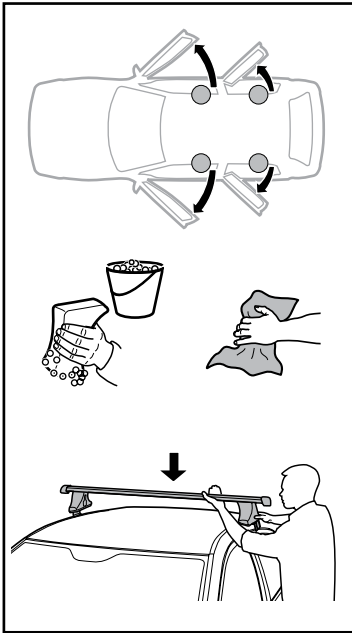
CHRYSLER 300, 4-dr Sedan, *11-

DODGE Charger, 4-dr Sedan, *11-

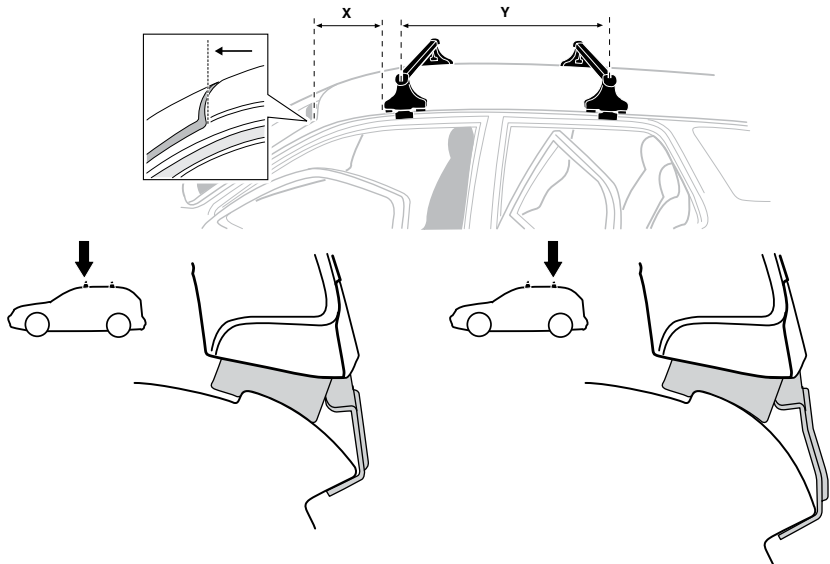
LANCIA Thema, 4-dr Sedan, 11-



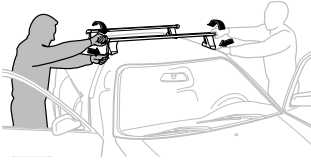
6



	X mm	Y mm	X inch	Y inch
CHRYSLER 300, 4-dr Sedan, *11-	210 mm	740 mm	8 1/4"	29"
DODGE Charger, 4-dr Sedan, *11-	210 mm	740 mm	8 1/4"	29"
LANCIA Thema, 4-dr Sedan, 11-	210 mm	740 mm	8 1/4"	29"



7



GB/US Tighten alternately
D Die Schrauben abwechselnd anziehen
F Serrer alternativement chaque côté
NL Afwisselend aan de linker- en de rechterkant aandraaien
I Alternare il serraggio delle viti
E Apretar alternativamente
PT Aperte alternadamente
S Dra åt växelvis
FIN Kierrä vuorotellen
EST Pinguldage vaheldumisi
LAT Pievelciēt pamišus
LIT Užsukinėkite pakaitomis
PL Śruby dokręcaj naprzemiennie
RU Затягивайте попеременно

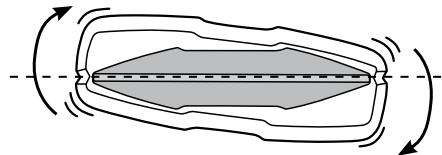
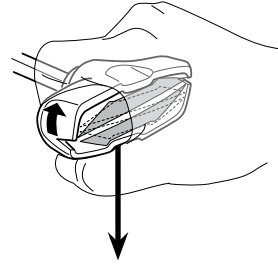
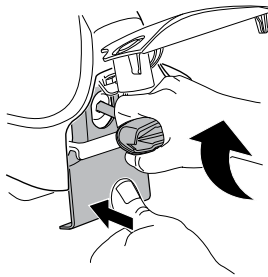
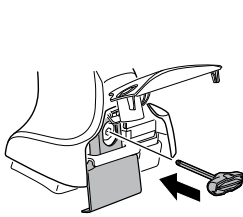
CZ Pokrétla bagazníka dokręcaj dokręcaj naprzemiennie.
SK Doťahujte striedavo
SLO Privijajte izmenično.
HR Naizmjenično zategnite
HU Egymástól függetlenül szorítandó
GR Σφιγγετέ εναλλάξ
TR Dönüşümlü sıkın

中文 交替拧紧

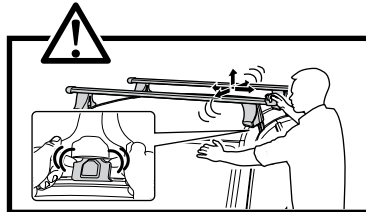
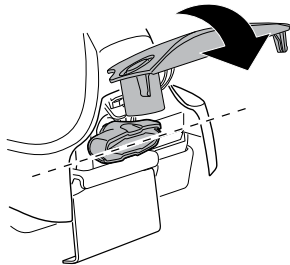
한국어 번갈아 가며 조이십시오.

日本語 交互に締め付けてください。

ไทย ชั้ในแบบสลับ



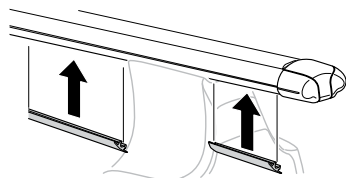
≈ 3 Nm

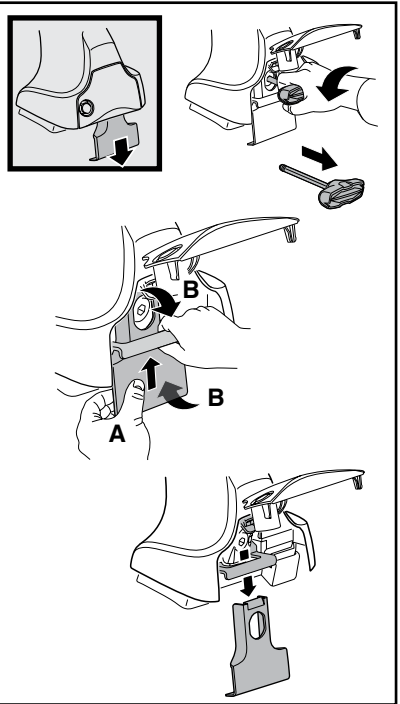
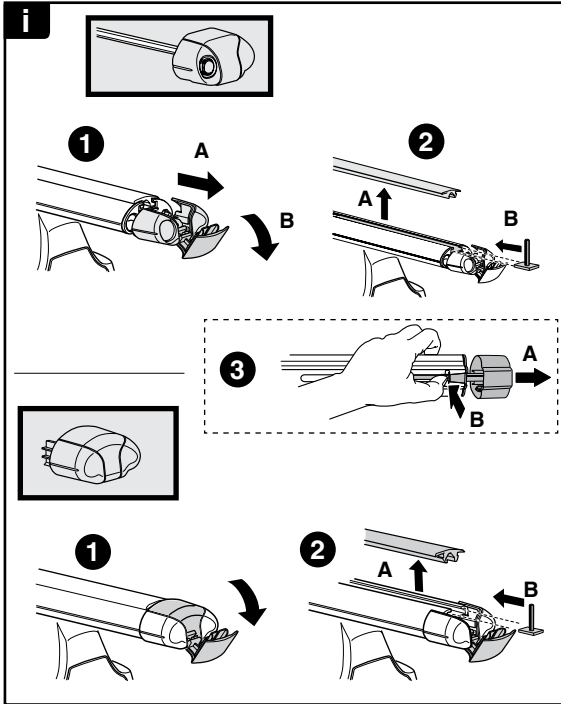
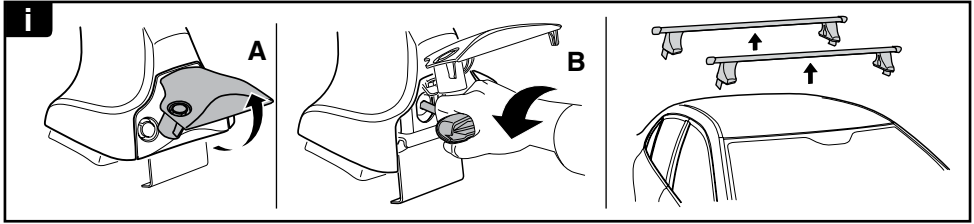


8

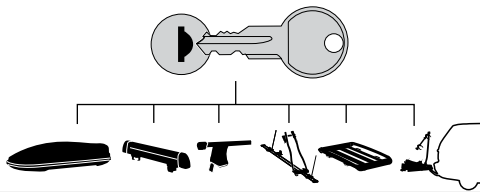


x1
17 mm

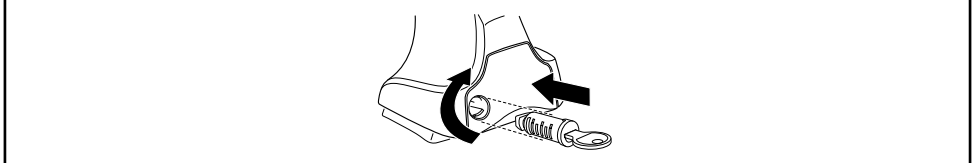




THULE
SWEDEN
**ONE
KEY
SYSTEM**



- 544** (x4)
- 596** (x6)
- 588** (x8)
- NA **510** (x10)
- EUR **452** (x12)
- ASIA



WW ▶ Thule Sweden AB, Box 69, 330 33 Hillerstorp, SWEDEN
NA ▶ Thule Inc., 42 Silvermine Road, Seymour, Connecticut 06483, USA

info@thule.com
customer.service@thule.com

www.thule.com