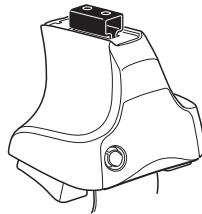
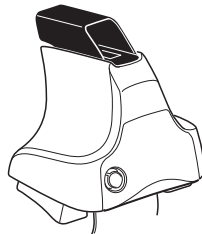
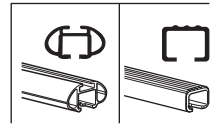


Kit 1665

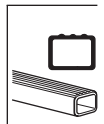
FORD Ranger, 4-dr Double Cab, 11-
FORD Ranger, 4-dr Super Cab, 11-
FORD Ranger, 2-dr Single Cab, 11-



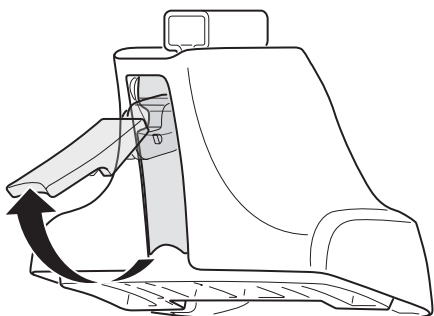
754 Rapid System
480R Rapid Traverse (North America)



480 Traverse (North America)



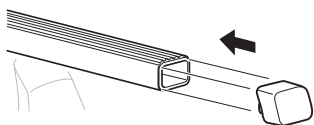
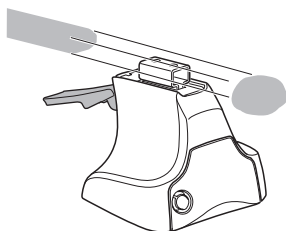
1



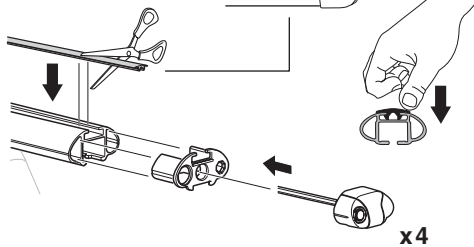
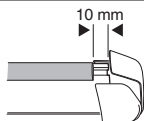
2



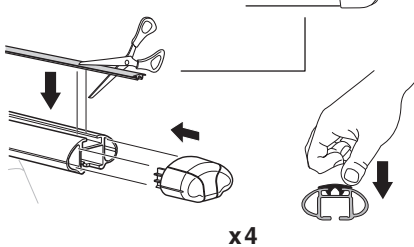
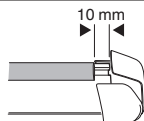
754 Rapid System
480R Rapid Traverse
(North America)



x4



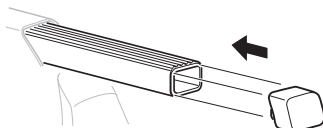
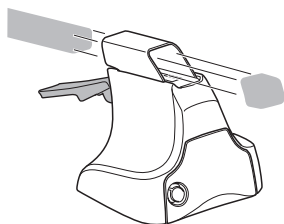
x4



x4

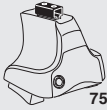


480 Traverse
(North America)

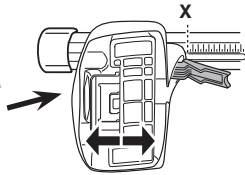


x4

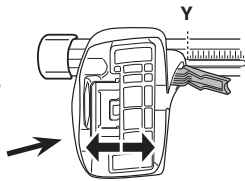
3



754 Rapid System



	X
FORD Ranger, 4-dr Double Cab, 11-	45,5
FORD Ranger, 4-dr Super Cab, 11-	45,5
FORD Ranger, 2-dr Single Cab, 11-	45,5



	Y
FORD Ranger, 4-dr Double Cab, 11-	44
FORD Ranger, 4-dr Super Cab, 11-	46
FORD Ranger, 2-dr Single Cab, 11-	-

3



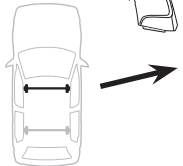
480R Rapid Traverse



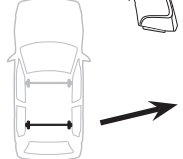
480 Traverse



(North America)

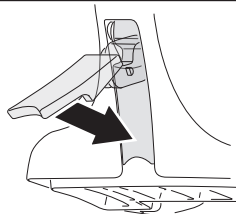


	X inch	X mm
FORD Ranger, 4-dr Double Cab, 11-	43 1/2"	1106 mm
FORD Ranger, 4-dr Super Cab, 11-	43 1/2"	1106 mm
FORD Ranger, 2-dr Single Cab, 11-	43 1/2"	1106 mm



	Y inch	Y mm
FORD Ranger, 4-dr Double Cab, 11-	43"	1091 mm
FORD Ranger, 4-dr Super Cab, 11-	43 3/4"	1111 mm
FORD Ranger, 2-dr Single Cab, 11-	-	-

4

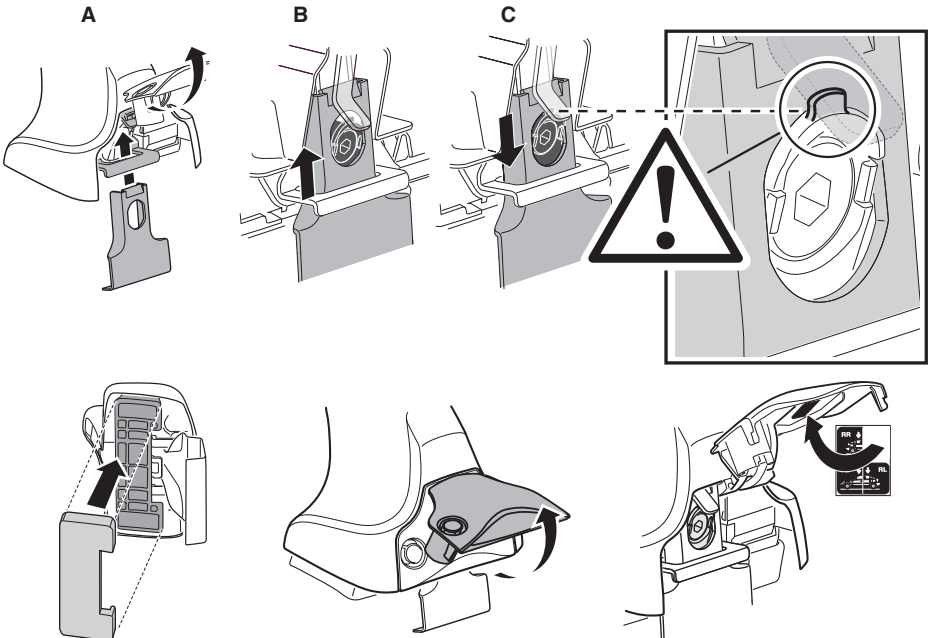


5

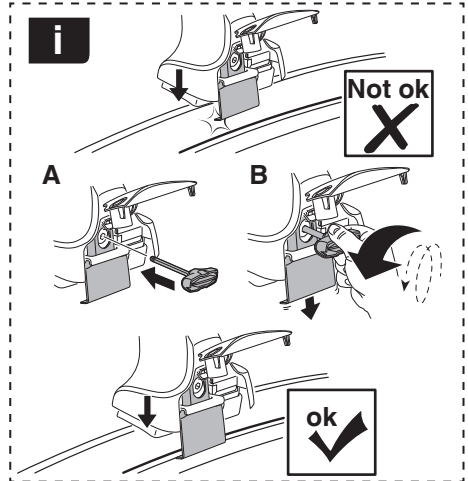
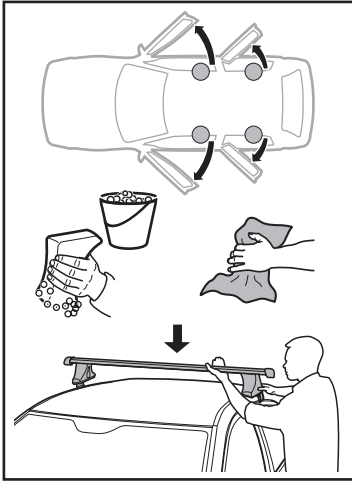
FORD Ranger, 4-dr Double Cab, 11-
FORD Ranger, 4-dr Super Cab, 11-



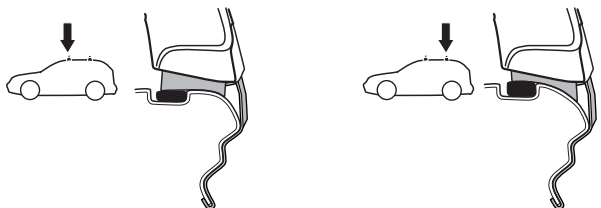
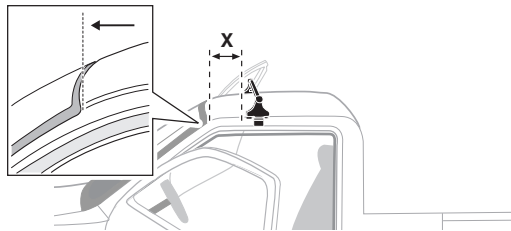
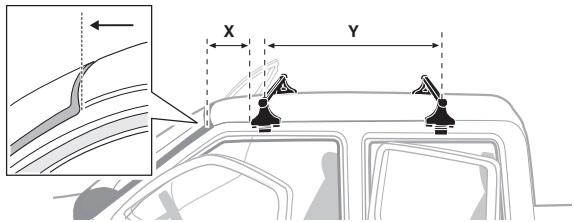
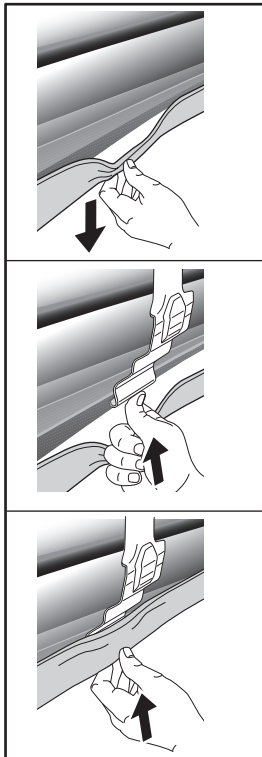
FORD Ranger, 2-dr Single Cab, 11-



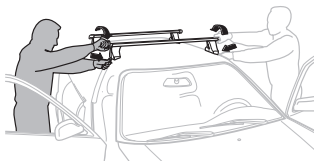
6



	X mm	Y mm	X inch	Y inch
FORD Ranger, 4-dr Double Cab, 11-	235 mm	700 mm	9 1/4"	27 1/2"
FORD Ranger, 4-dr Super Cab, 11-	235 mm	600 mm	9 1/4"	23 5/8"
FORD Ranger, 2-dr Single Cab, 11-	235 mm	-	9 1/4"	-



7



GB/US Tighten alternately
 D Die Schrauben abwechselnd anziehen
 F Serrer alternativement chaque côté
 NL Afwisselend aan de linker- en de rechterkant aandraaien
 I Alternare il serraggio delle viti
 E Apertar alternativamente
 PT Aperte alternadamente
 S Dra åt växelvis
 FIN Kierrä vuorotellen
 EST Pinguldage vaheldumisi
 LAT Pieļieciet pamišus
 LIT Užsukinėkite pakaitomis
 PL Śruby dokręcaj naprzemiennie
 RU Затягивайте попеременно

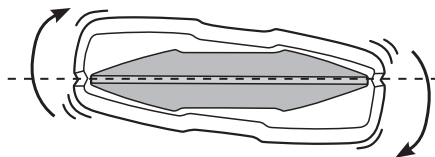
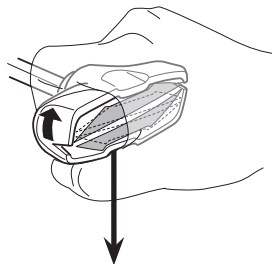
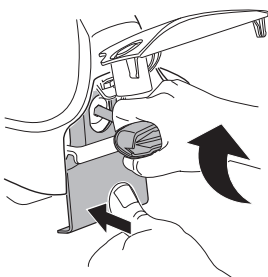
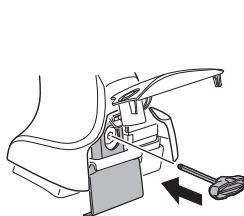
CZ Pokręťta bagażnika dokręcaj dokręcaj naprzemiennie.
 SK Dofahajte striedavo
 SLO Privijajte izmenično.
 HR Naizmjenočno zategnite
 HU Egymástól függetlenül szorítandó
 GR Σφιγγετε εναλλάξ
 TR Dönüşümlü sıkın

中文 交替拧紧

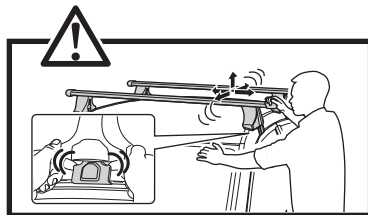
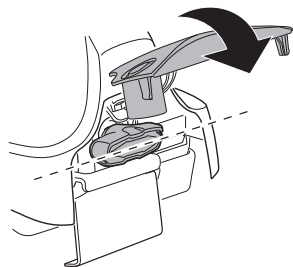
한국어 번갈아 가며 조이십시오.

日本語 交互に締め付けてください。

ไทย ชันในแบบสลับ



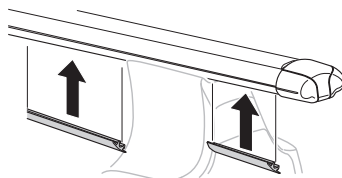
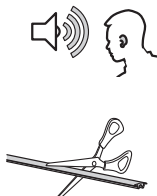
≈ 3 Nm

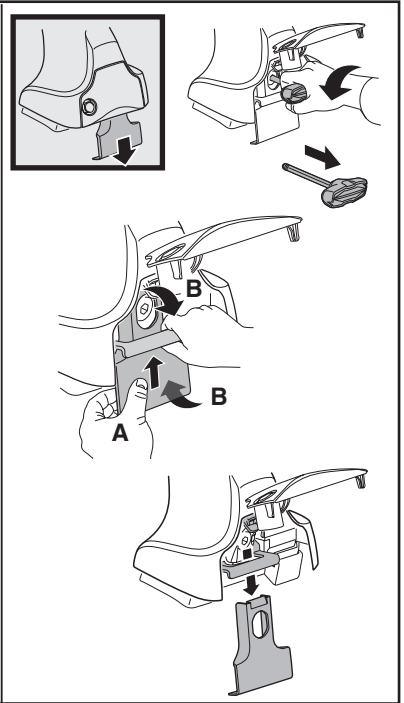
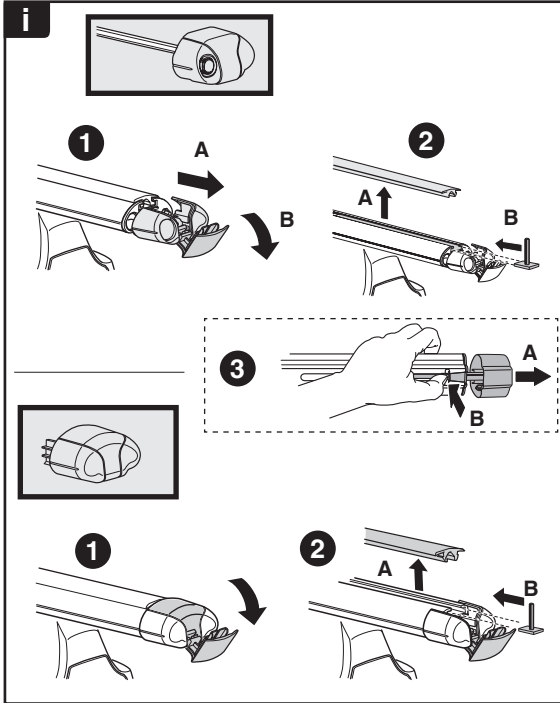
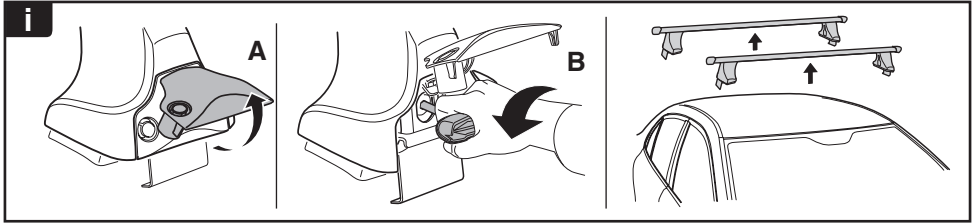


8



x1
17 mm





THULE
SWEDEN
**ONE
KEY
SYSTEM**



		(x4)
		(x6)
		(x8)
NA		(x10)
EUR		(x12)
ASIA		



WW ▶ Thule Sweden AB, Box 69, 330 33 Hillerstorp, SWEDEN
NA ▶ Thule Inc., 42 Silvermine Road, Seymour, Connecticut 06483, USA

info@thule.com
customer.service@thule.com

www.thule.com



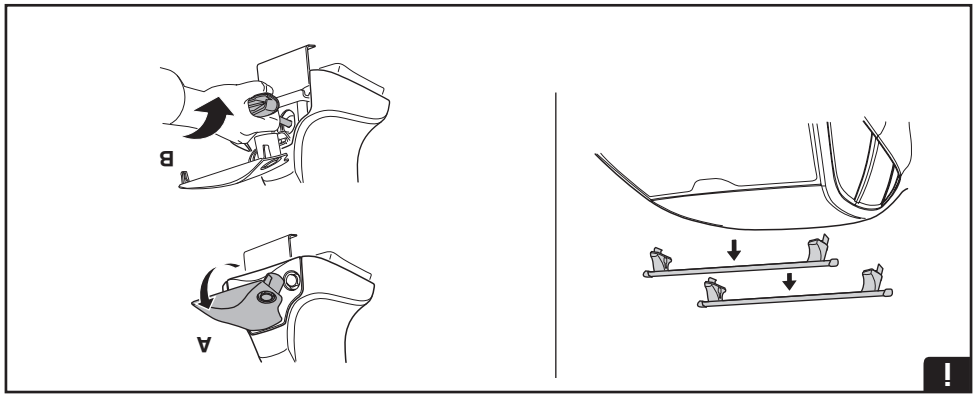
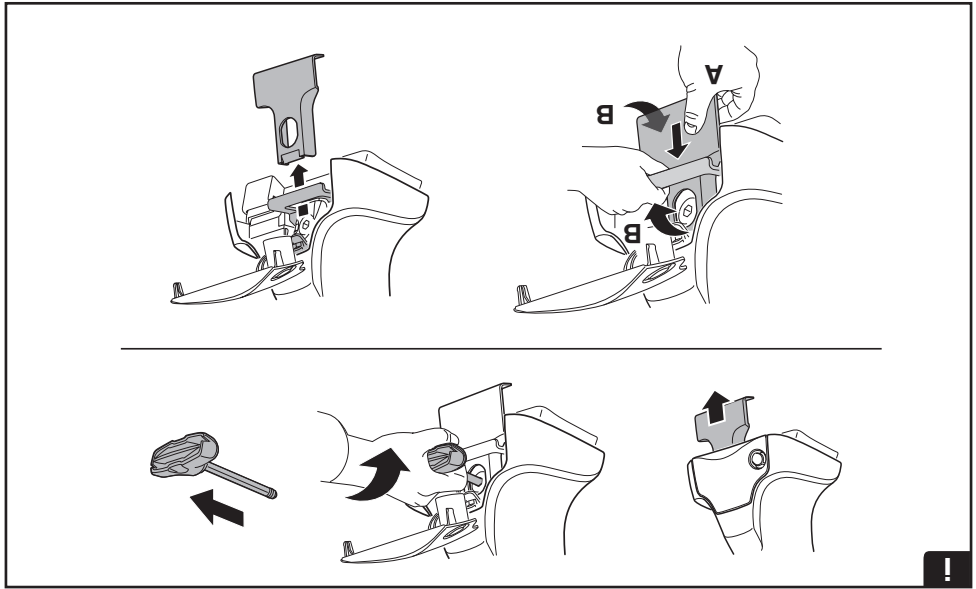
www.thule.com

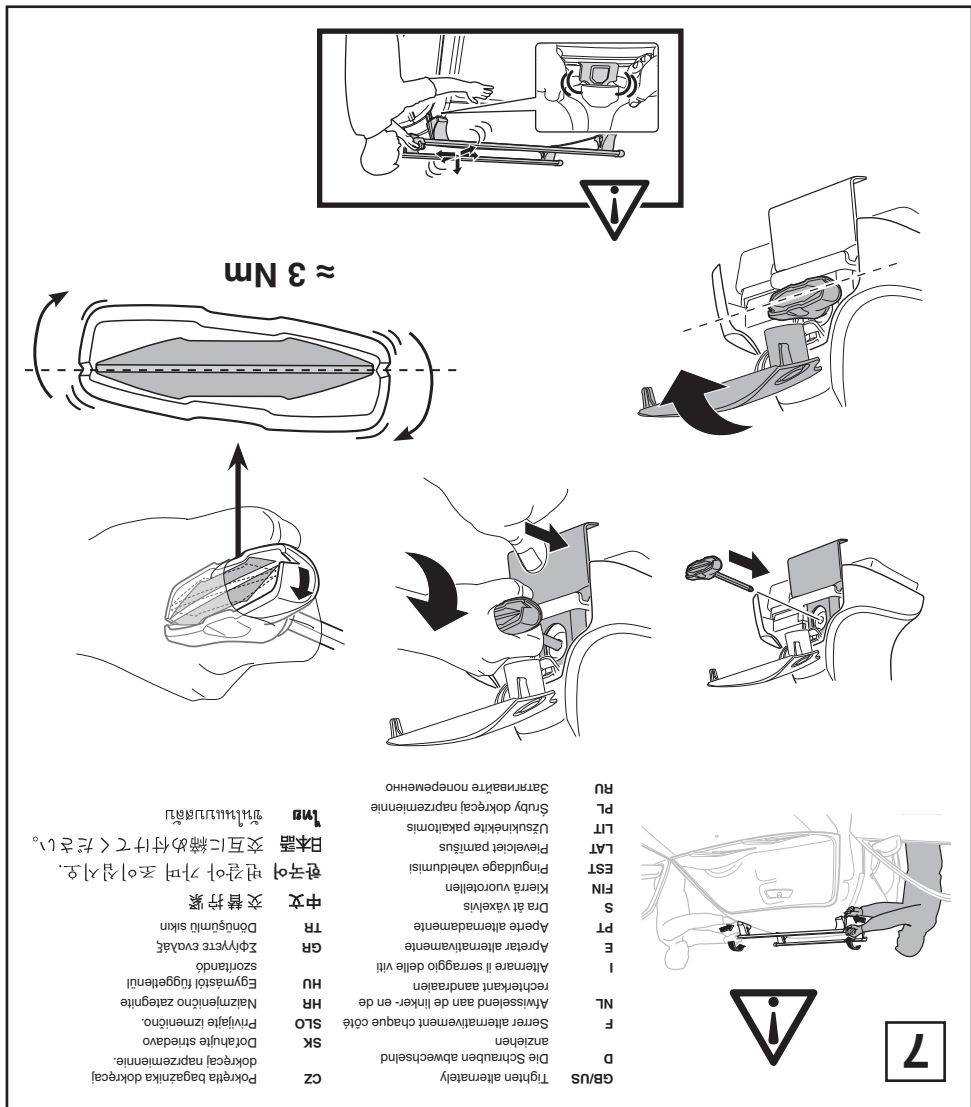
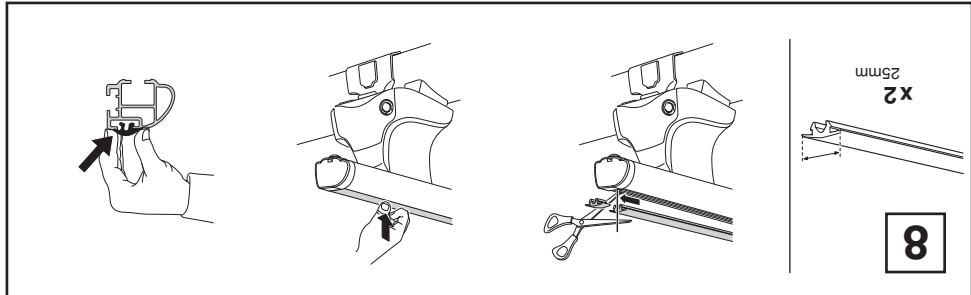


info@thule.com
customer.service@thule.com



Thule Inc., 42 Silvermine Road, Seymour, Connecticut 06483, USA
Thule Sweden AB, Box 69, 330 33 Hillerstorp, SWEDEN

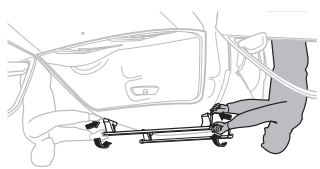




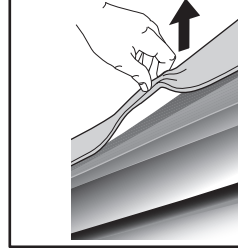
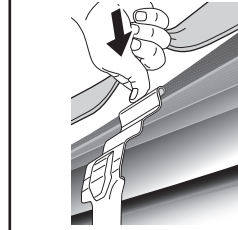
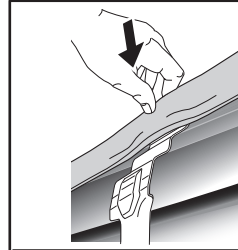
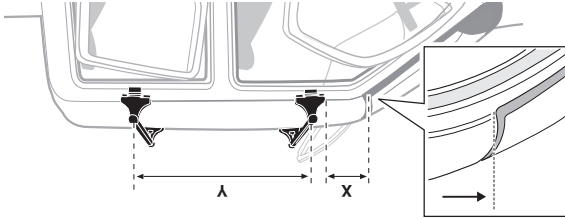
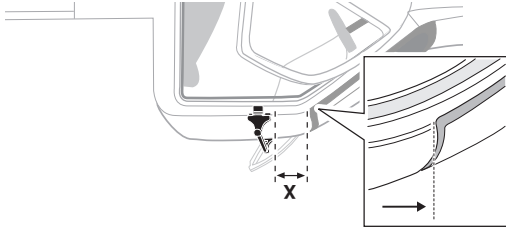
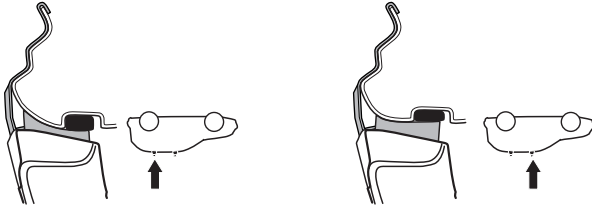
≈ 3 Nm

- CZ Pokrétla bagazníka dokrecaj dokrecaj naprazmenenie.
- SK Dotiahnuť strnadavo
- SLO Privajite izmenično.
- HR Nazmjenično zategnite.
- HU Egymástól függetlenül
- GR Zephyerte evadák szorítandó
- TR Dönüştürmlü sıkın
- 中文 交替拧紧
- 한국어 면갈아 가며 조이십시오.
- 日本語 交互に締め付けてください。
- ไทย หมุนสลับกัน

- GB/US Tighen alternatively
- D Die Schrauben abwechselnd anziehen
- F Serrer alternativement chaque côté
- NL Afwisselend aan de linker- en de rechterkant aandraaien
- I Alternare il serraggio delle viti
- E Aperte alternativamente
- PT Aperte alternadamente
- S Dra åt växelvis
- FIN Kierrä vuorotellen
- EST Pinguldage vaheldumisi
- LAT Pveiclot pantibus
- LIT Užskinkite pakalomis
- PL Uszkińkcie pakalomis
- RU Затяните попеременно

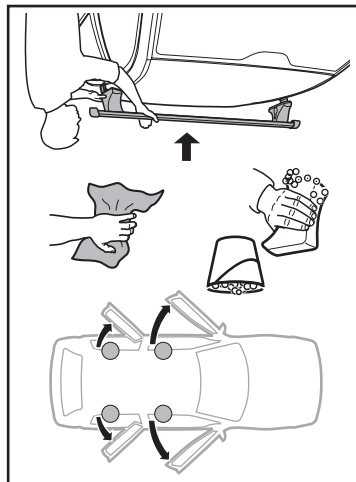
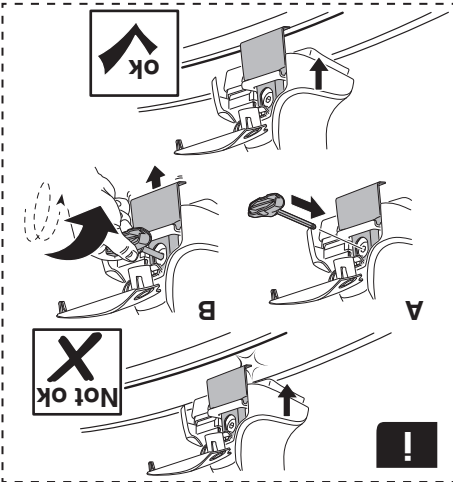


7

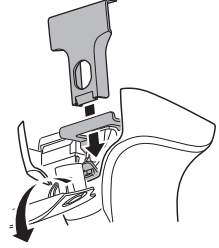
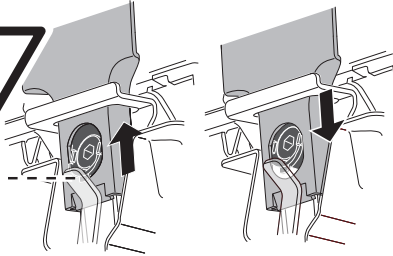
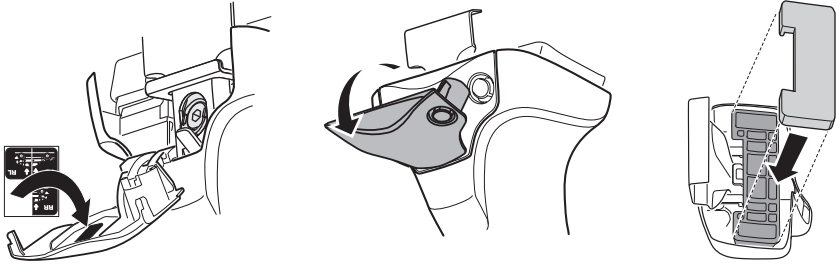


-	9 1/4"	-	235 mm	FORD Ranger, 2-dr Single Cab, 11-
23 5/8"	9 1/4"	600 mm	235 mm	FORD Ranger, 4-dr Super Cab, 11-
27 1/2"	9 1/4"	700 mm	235 mm	FORD Ranger, 4-dr Double Cab, 11-

X mm Y mm X inch Y inch



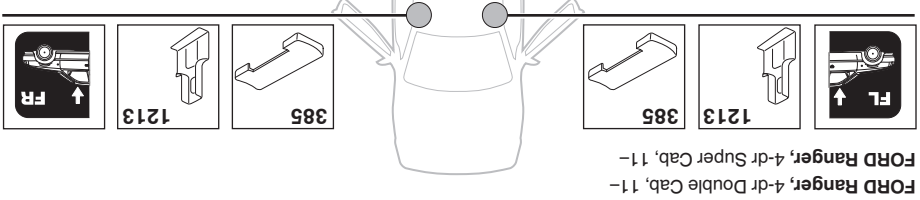
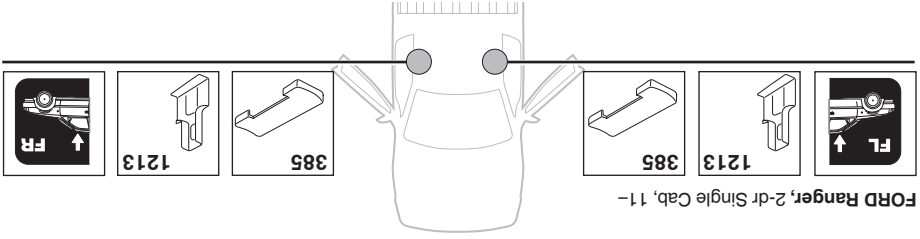
6

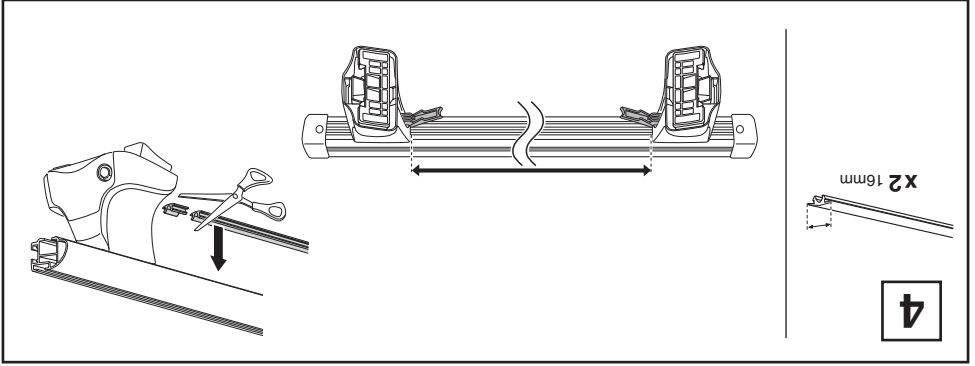


C

B

A



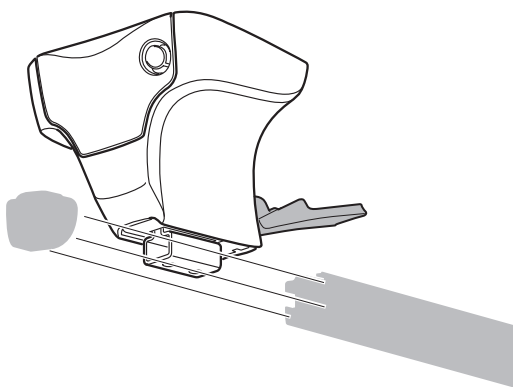
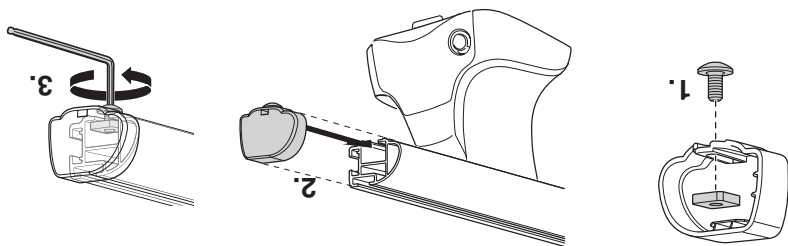


-	-	FORD Ranger, 2-dr Single Cab, 11-
1111 mm	43 ³ / ₄ "	FORD Ranger, 4-dr Super Cab, 11-
1091 mm	43 "	FORD Ranger, 4-dr Double Cab, 11-

Y inch
Y mm

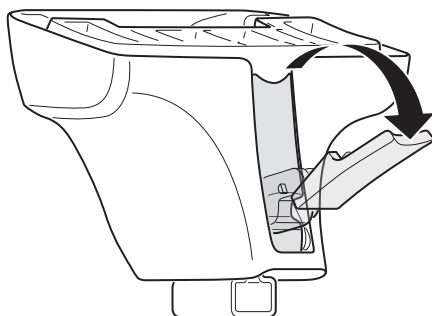
1106 mm	43 ¹ / ₂ "	FORD Ranger, 2-dr Single Cab, 11-
1106 mm	43 ¹ / ₂ "	FORD Ranger, 4-dr Super Cab, 11-
1106 mm	43 ¹ / ₂ "	FORD Ranger, 4-dr Double Cab, 11-

X inch
X mm

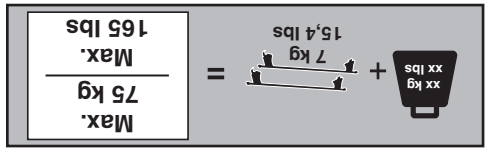
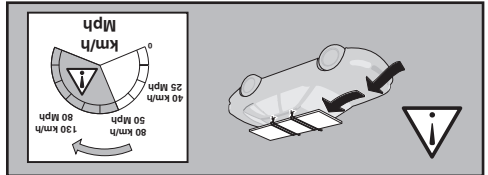
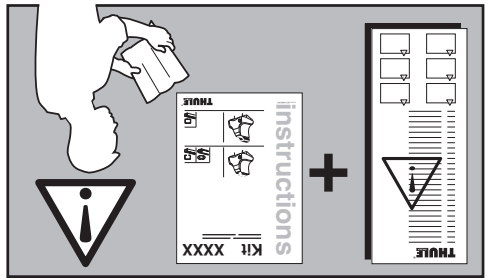
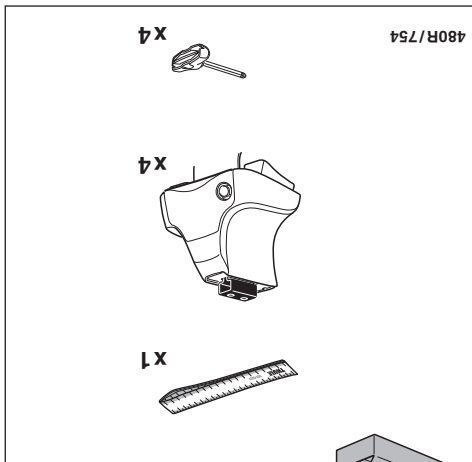
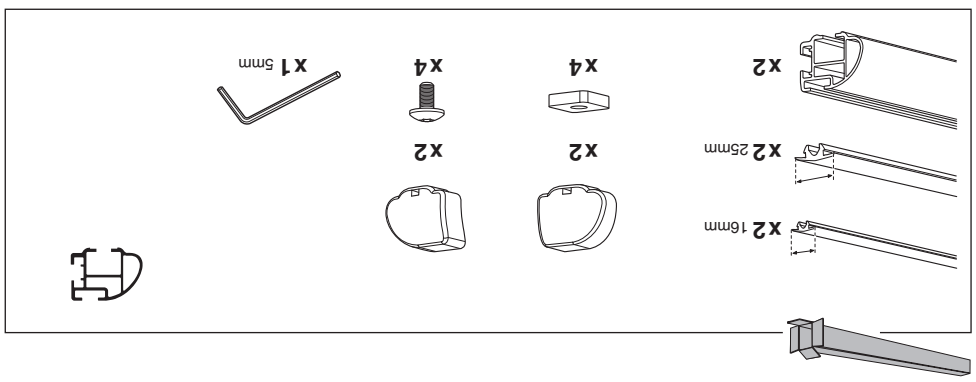
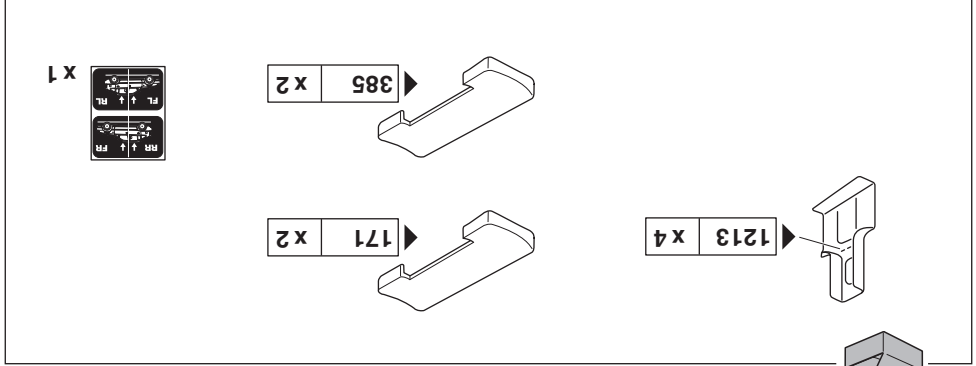


- x2 [Top Cover]
- x2 [Screw]
- x4 [Bracket]
- x4 [Screw]
- x1 5mm [Allen Key]

2



1

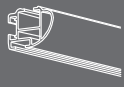
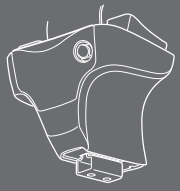


instructions

Kit 1665

- FORD Ranger, 4-dr Double Cab, 11-
- FORD Ranger, 4-dr Super Cab, 11-
- FORD Ranger, 2-dr Single Cab, 11-

480R
754



ISO 11154-E

THULE
SWEDEN
PROFESSIONAL