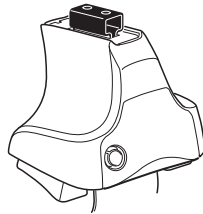
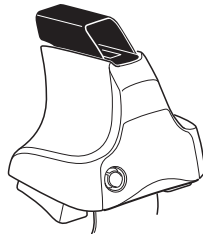
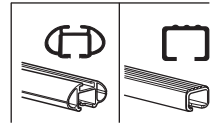


# Kit 1708

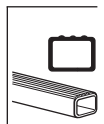
AUDI A3, 3-dr Hatchback, 12-  
AUDI A3, 5-dr Hatchback, 12-



754 Rapid System  
480R Rapid Traverse (North America)



480 Traverse (North America)



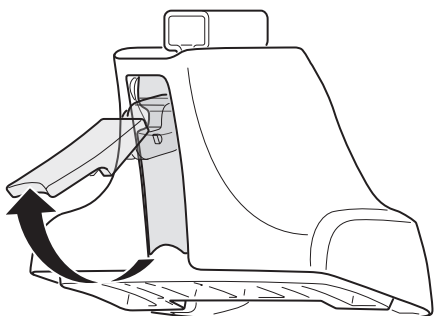
- 754 Rapid System x4
- 480R Rapid Traverse (North America) x4
- 754 Rapid System x1
- 480R Rapid Traverse (North America) x4
- Key x4

- Traverse (North America) x1
- Traverse (North America) x4
- Key x4

- 2x [Bracket]
- 2x [Screw]
- 2x [Screw]
- 2x [Screw]
- 4x [Bushing]
- 4x [Bushing]
- 1x [Bracket]
- 2x [Screw]
- 2x [Screw]
- 2x [Screw]
- 2x [Screw]
- 2x [Screw]
- 2x [Bracket]
- 2x [Bracket]

- 1127 x2
- 1172 x2
- 166 x2
- 249 x1
- 250 x1
- [Plate]
- [Label]

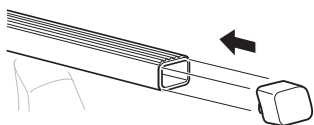
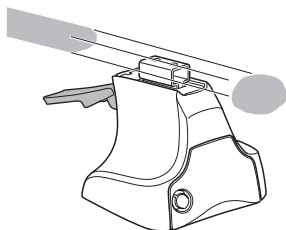
1



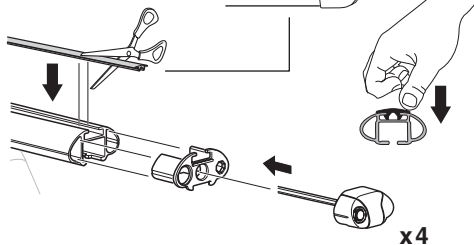
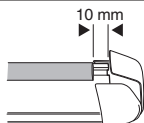
2



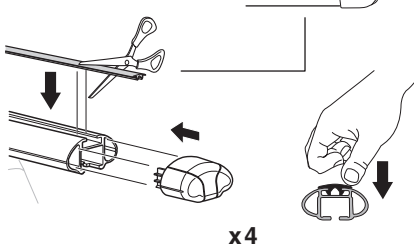
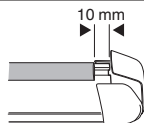
754 Rapid System  
480R Rapid Traverse  
(North America)



x4



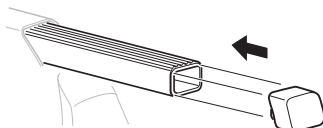
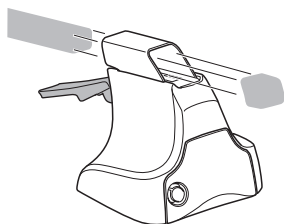
x4



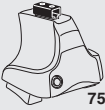
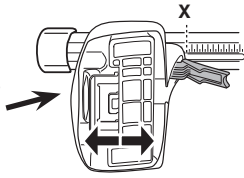
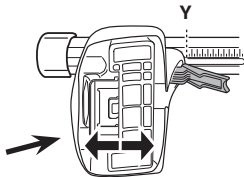
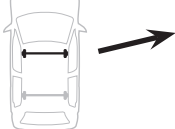
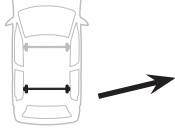
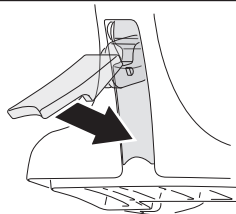
x4



480 Traverse  
(North America)



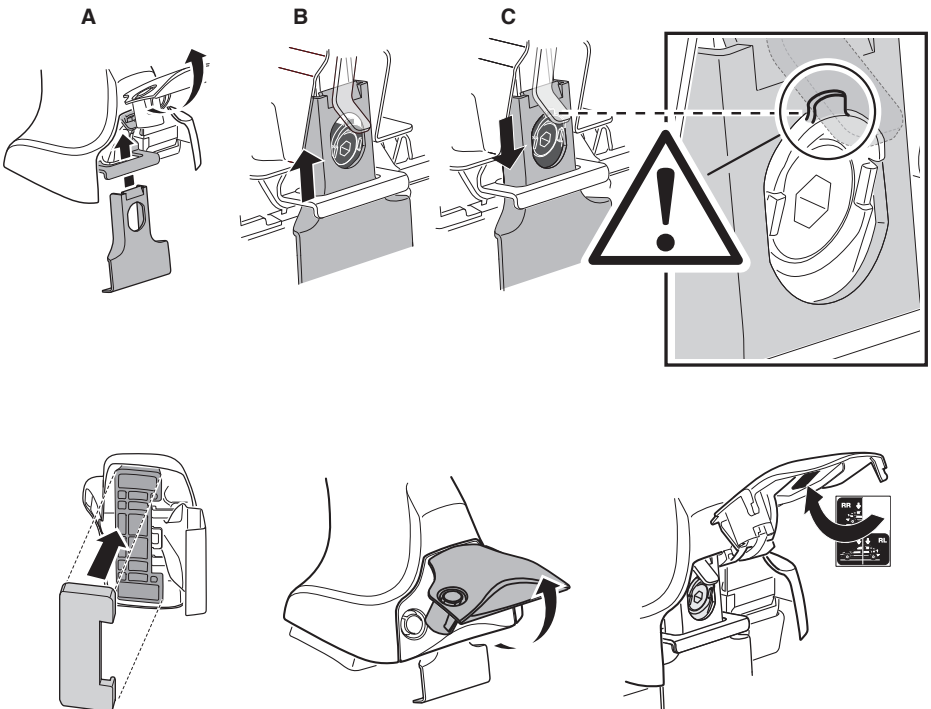
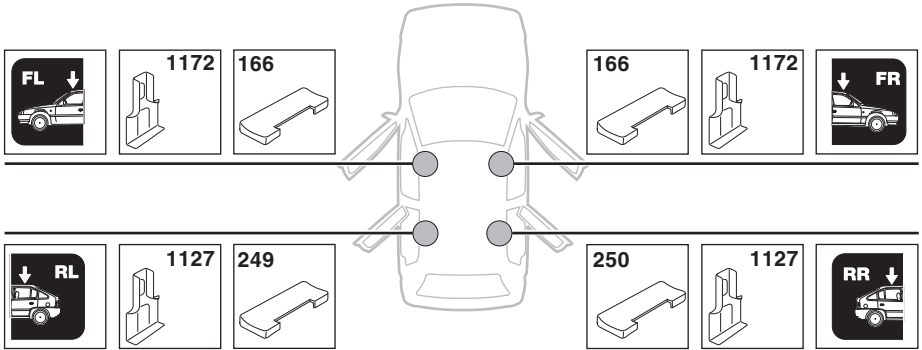
x4

**3****754** Rapid System**X****AUDI A3, 3-dr Hatchback, 12-****36,5****AUDI A3, 5-dr Hatchback, 12-****36,5****Y****AUDI A3, 3-dr Hatchback, 12-****31****AUDI A3, 5-dr Hatchback, 12-****31****3****480R** Rapid Traverse**480** Traverse**(North America)****X inch****X mm****AUDI A3, 3-dr Hatchback, 12-****40"****1016 mm****AUDI A3, 5-dr Hatchback, 12-****40"****1016 mm****Y inch****Y mm****AUDI A3, 3-dr Hatchback, 12-****37 7/8"****961 mm****AUDI A3, 5-dr Hatchback, 12-****37 7/8"****961 mm****4**

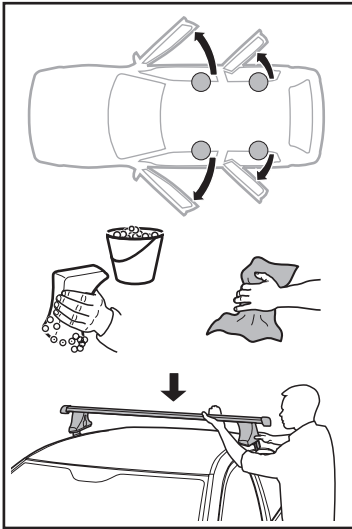
# 5

AUDI A3, 3-dr Hatchback, 12–

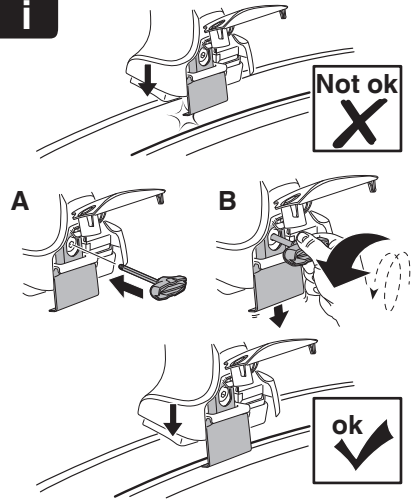
AUDI A3, 5-dr Hatchback, 12–



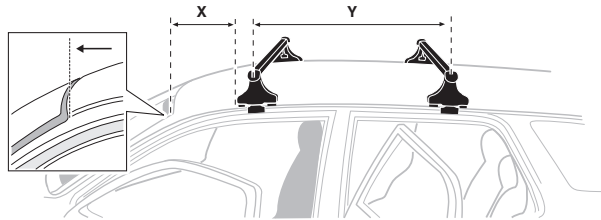
6



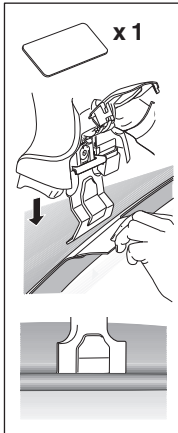
i



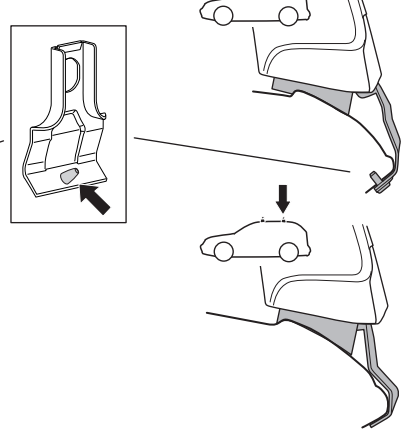
	X mm	Y mm	X inch	Y inch
AUDI A3, 3-dr Hatchback, 12-	250 mm	710 mm	9 7/8"	28"
AUDI A3, 5-dr Hatchback, 12-	250 mm	710 mm	9 7/8"	28"



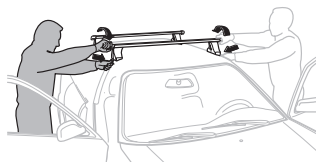
AUDI A3,  
3-dr Hatchback, 12-



AUDI A3,  
5-dr Hatchback, 12-



7



GB/US Tighten alternately  
 D Die Schrauben abwechselnd anziehen  
 F Serrer alternativement chaque côté  
 NL Afwisselend aan de linker- en de rechterkant aandraaien  
 I Alternare il serraggio delle viti  
 E Apretar alternativamente  
 PT Aperte alternadamente  
 S Dra åt växelvis  
 FIN Kierrä vuorotellen  
 EST Pinguldage vaheldumisi  
 LAT Pieļieciet pamīšus  
 LIT Užsukinėkite pakaitomis  
 PL Śruby dokręcaj naprzemiennie  
 RU Затягивайте попеременно

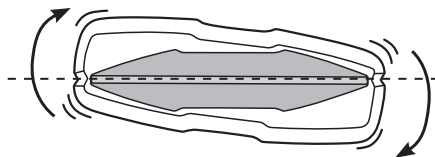
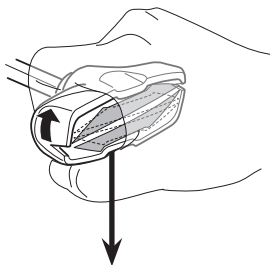
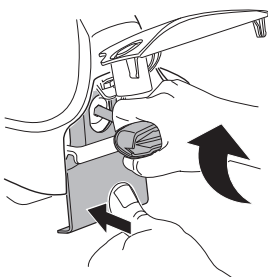
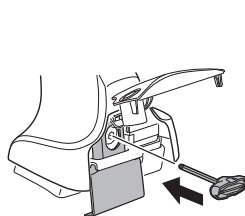
CZ Pokręťta bagażnika dokręcaj dokręcaj naprzemiennie.  
 SK Dofahajte striedavo  
 SLO Privijajte izmenično.  
 HR Naizmjenočno zategnite  
 HU Egymástól függetlenül szorítandó  
 GR Σφιγγείτε εναλλάξ  
 TR Dönüşümlü sıkın

中文 交替拧紧

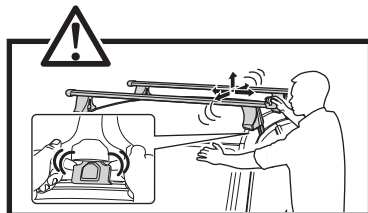
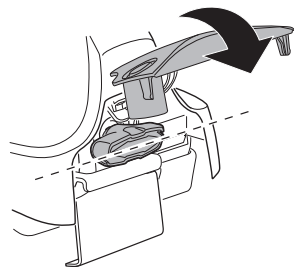
한국어 번갈아 가며 조이십시오.

日本語 交互に締め付けてください。

ไทย ชันในแบบสลับ



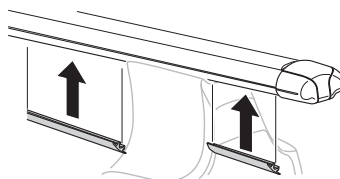
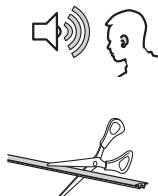
≈ 3 Nm

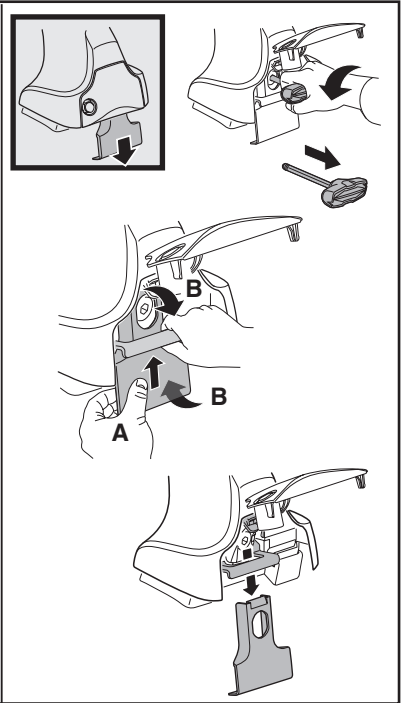
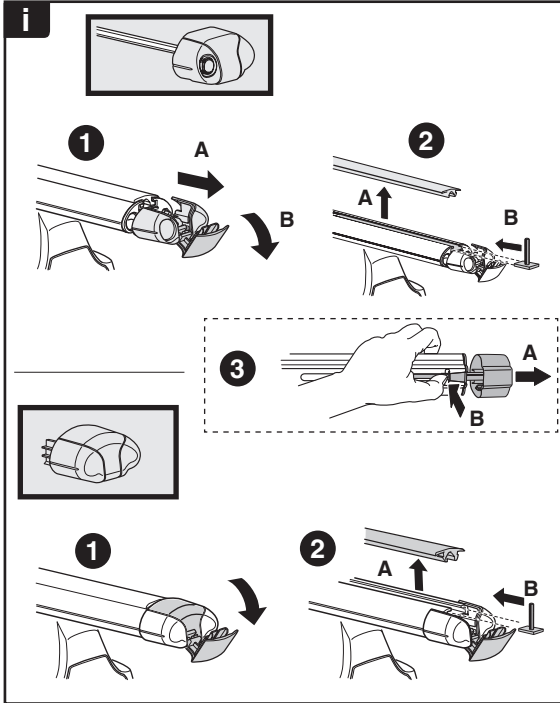
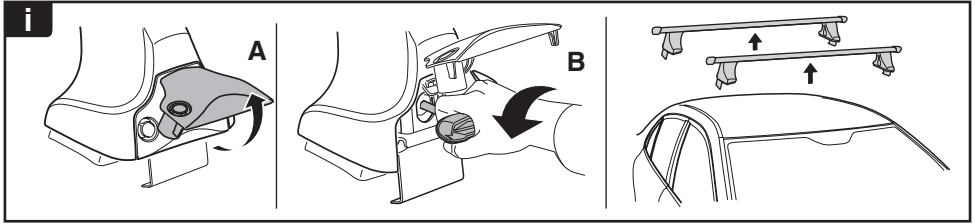


8

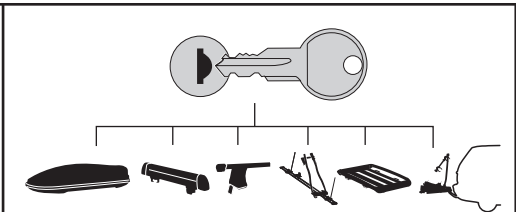


x1  
17 mm

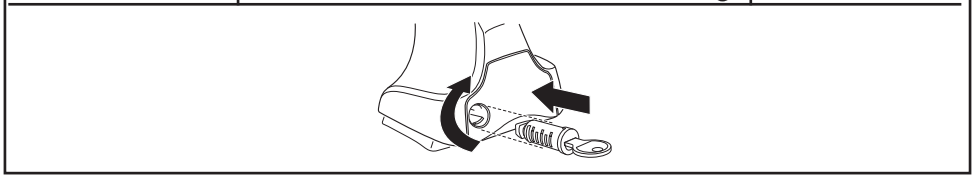




**THULE**  
SWEDEN  
**ONE  
KEY  
SYSTEM**



		(x4)
		(x6)
		(x8)
NA		(x10)
EUR		(x12)
ASIA		



WW ▶ Thule Sweden AB, Box 69, 330 33 Hillerstorp, SWEDEN  
NA ▶ Thule Inc., 42 Silvermine Road, Seymour, Connecticut 06483, USA

info@thule.com  
customer.service@thule.com

www.thule.com