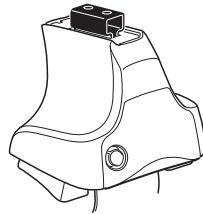
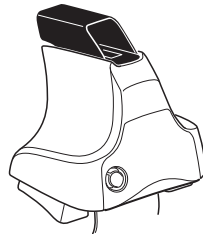
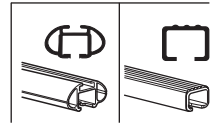


Kit 1729

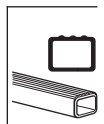
LAND ROVER Range Rover, 5-dr SUV, 13-



754 Rapid System
480R Rapid Traverse (North America)



480 Traverse (North America)



xx kg
 xx lbs + 7 kg
 15,4 lbs =
**Max.
40 kg**
**Max.
88 lbs**

80 km/h 50 Mph 130 km/h 80 Mph
 40 km/h 25 Mph

km/h Mph

+ Kit XXXX

x1 x4
 x4 x4

754 Rapid System
 480R Rapid Traverse (North America)

x1 x4 x4

754 Rapid System
 480R Rapid Traverse (North America)

x1 x4 x4

480 Traverse (North America)

x2 x2 x2 x1 x2 x2

23 mm 17 mm 23 mm

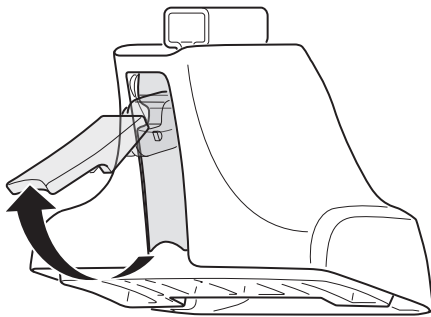
x4 x2 x2 x2

x4 x4

(North America)

1263 x4 404 x4 x1

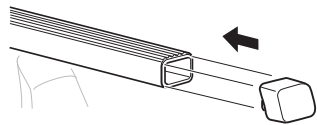
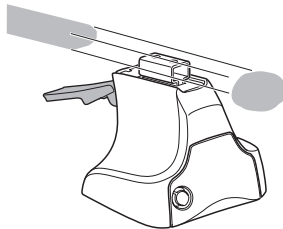
1



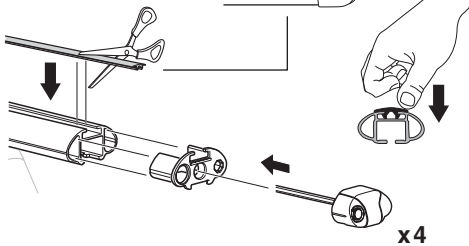
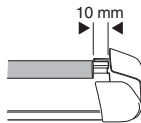
2



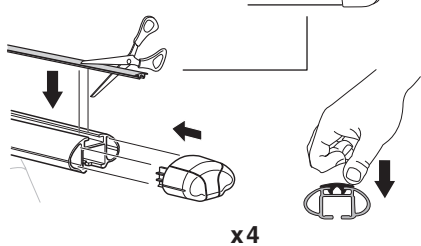
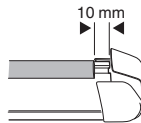
754 Rapid System
480R Rapid Traverse
(North America)



x4



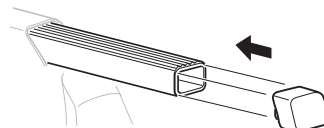
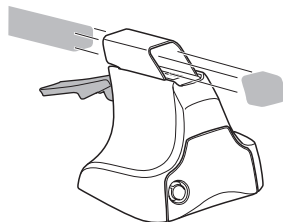
x4



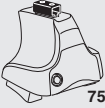
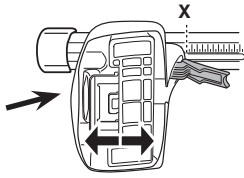
x4



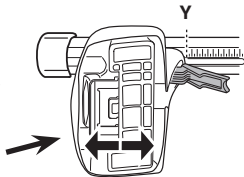
480 Traverse
(North America)



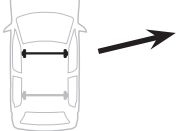
x4

3**754** Rapid System

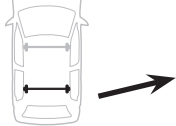
	X
LAND ROVER Range Rover, 5-dr SUV, 13-	59,5



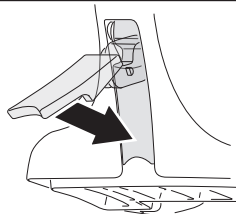
	Y
LAND ROVER Range Rover, 5-dr SUV, 13-	59

3**480R** Rapid Traverse**480** Traverse**(North America)**

	X inch	X mm
LAND ROVER Range Rover, 5-dr SUV, 13-	49"	1246 mm

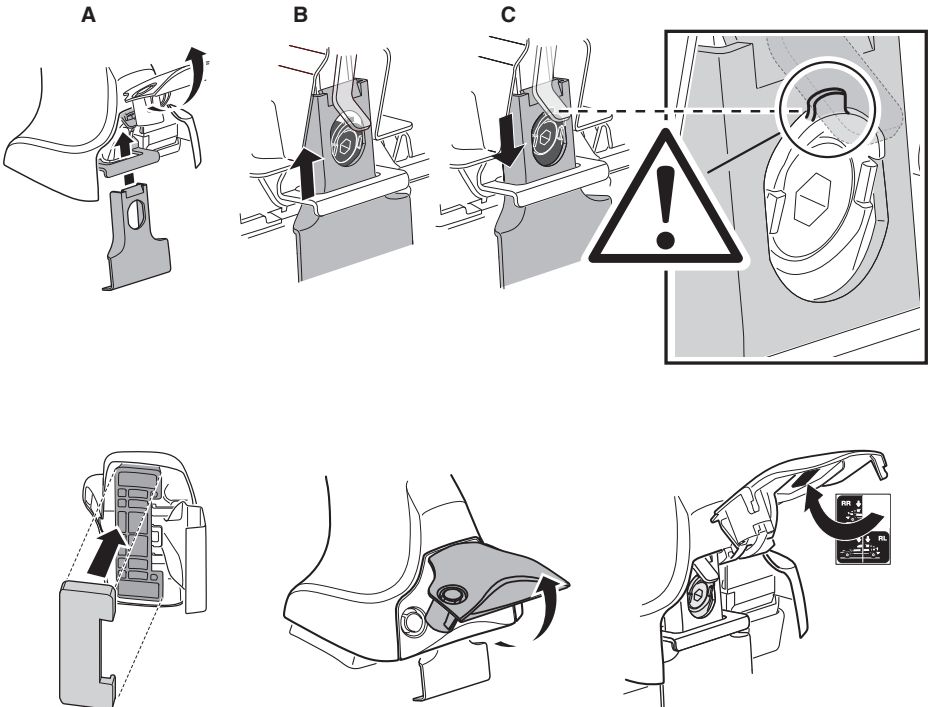
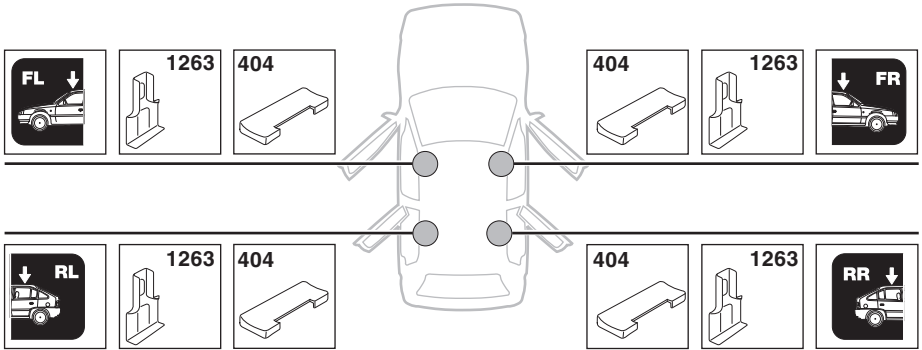


	Y inch	Y mm
LAND ROVER Range Rover, 5-dr SUV, 13-	48 7/8"	1241 mm

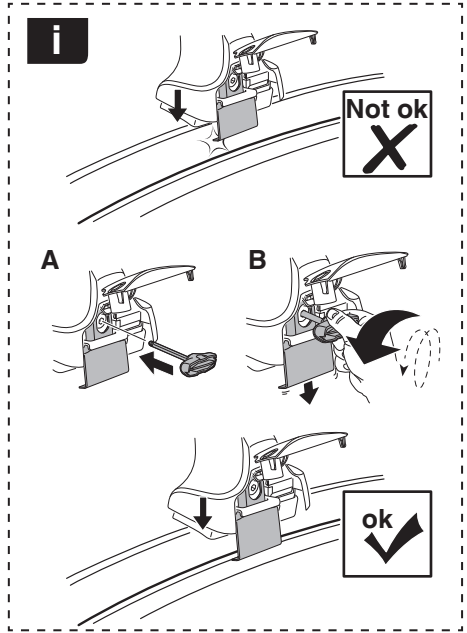
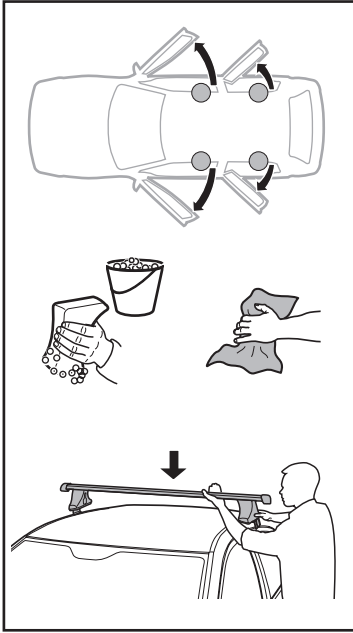
4

5

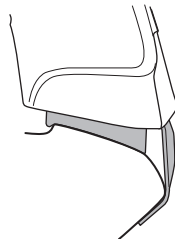
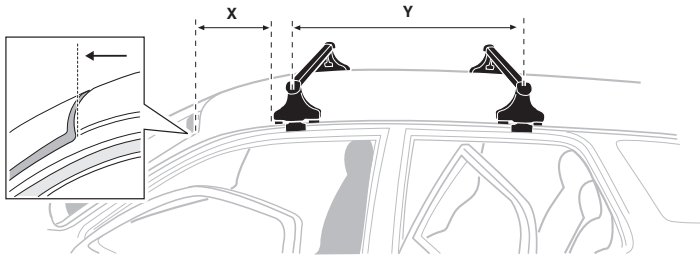
LAND ROVER Range Rover, 5-dr SUV, 13-



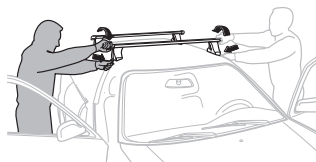
6



	X mm	Y mm	X inch	Y inch
LAND ROVER Range Rover, 5-dr SUV, 13-	320 mm	750 mm	12 ⁵ / ₈ "	29 ¹ / ₂ "



7



GB/US Tighten alternately
D Die Schrauben abwechselnd anziehen
F Serrer alternativement chaque côté
NL Afwisselend aan de linker- en de rechterkant aandraaien
I Alternare il serraggio delle viti
E Apretar alternativamente
PT Aperte alternadamente
S Dra åt växelvis
FIN Kierrä vuorotellen
EST Pinguldage vaheldumisi
LAT Pielveiciet pamišus
LIT Užsukinėkite pakaitomis
PL Śruby dokręcaj naprzemiennie
RU Затягивайте попеременно

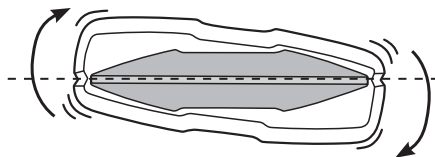
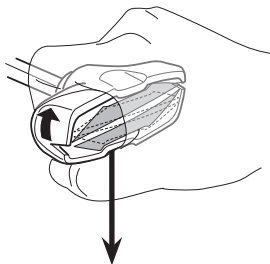
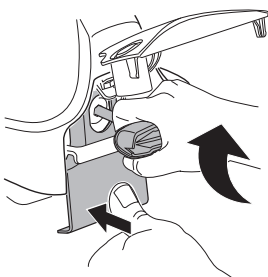
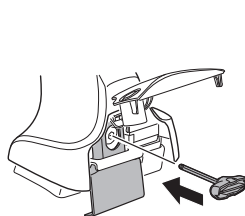
CZ Pokręťta bagażnika dokręcaj naprzemiennie.
SK Dofahajte striedavo
SLO Privijajte izmenično.
HR Naizmjenočno zategnite
HU Egymástól függetlenül szorítandó
GR Σφιγγείτε εναλλάξ
TR Dönüşümlü sıkın

中文 交替拧紧

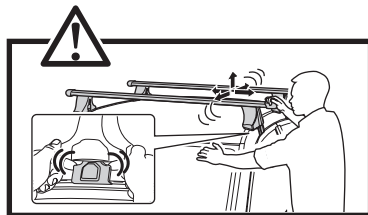
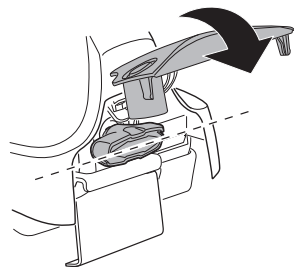
한국어 번갈아 가며 조이십시오.

日本語 交互に締め付けてください。

ไทย ชันในแบบสลับ



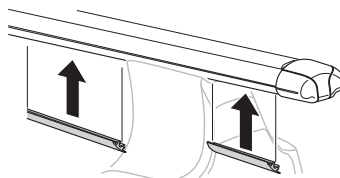
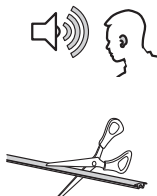
≈ 3 Nm

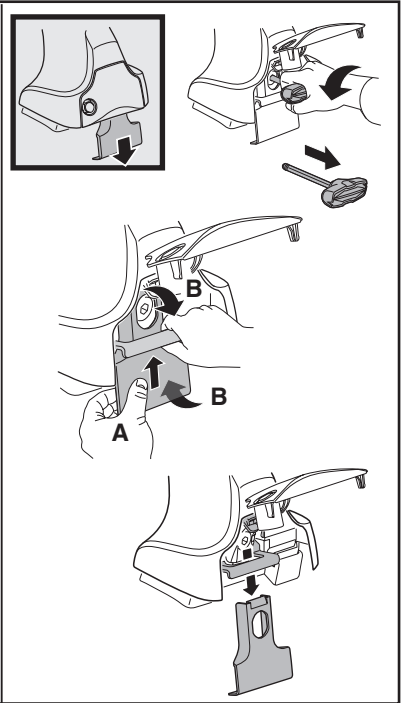
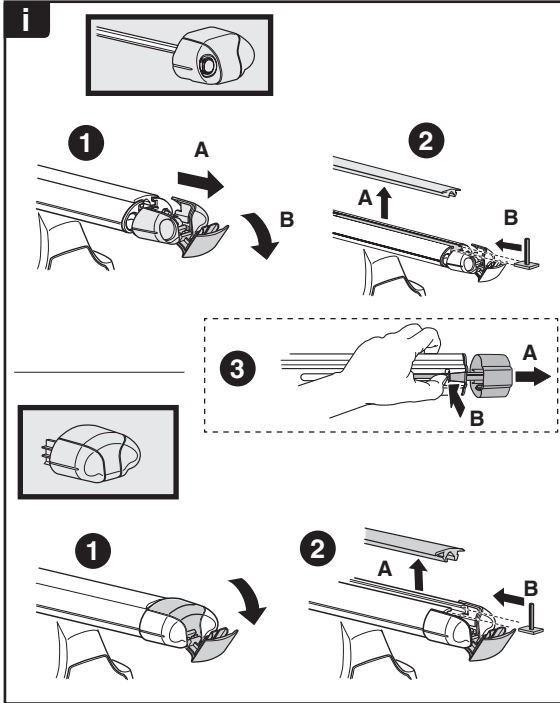
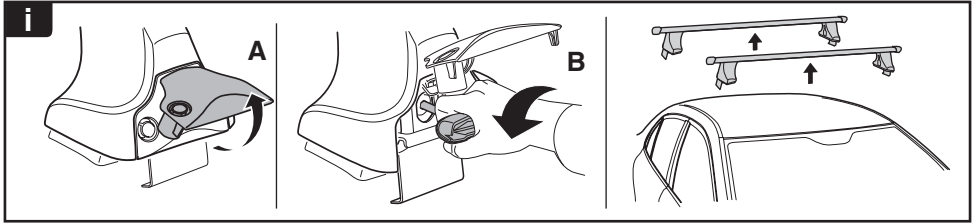


8



x1
17 mm





THULE
SWEDEN
**ONE
KEY
SYSTEM**



		(x4)
		(x6)
		(x8)
NA		(x10)
EUR		(x12)
ASIA		



WW ▶ Thule Sweden AB, Box 69, 330 33 Hillerstorp, SWEDEN
NA ▶ Thule Inc., 42 Silvermine Road, Seymour, Connecticut 06483, USA

info@thule.com
customer.service@thule.com

www.thule.com